

# COVID-19 Information and Contact Tracing Process

# COVID-19 Contact Tracing Team

## **Human Resources Contacts:** [benefits@fscj.edu](mailto:benefits@fscj.edu)

Mark Lacey

Judy Robbins

Diana Crigger

Steven Gunter

Kyle Jones

## **Student Resource Contacts:** [AccommodateMe@fscj.edu](mailto:AccommodateMe@fscj.edu)

Denise Giarrusso

Kelly Harbert

Michael Litchfield

Michelle McLamb

Brandi Nieves

# Definitions/Notifications

## Definitions

- **Isolation** – separates sick people with a contagious disease from people who are not sick
- **Quarantine** – separates and restricts the movement of people who were exposed to a contagious disease to see if they become sick

## Notifications

- Quarantine/Isolation Notification
- Awareness (Low Risk) Notification

# When to Quarantine

- Close contact with someone who has COVID-19
  - 6 feet or less for a cumulative 15 minutes or more in a 24 hour period even if wearing a mask
  - Contact with no mask
- 14 days since last contact to allow for incubation period
- Contact with those under quarantine does not in itself merit self-quarantine

# Methods to Return from Isolation\*

- Symptom based strategy
  - 10 days
  - No fever for 24 hours without use of medication
  - Symptoms have improved (except taste and smell)
- Test based strategy
  - 2 Negative tests at least 24 hours apart

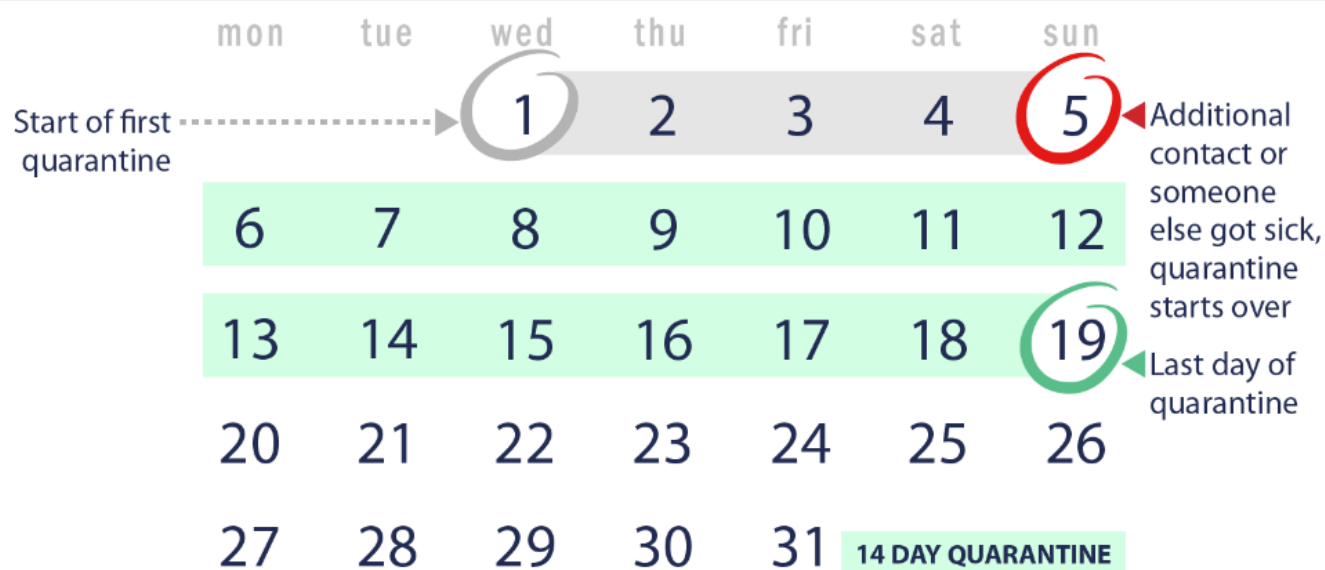
\*Isolation not Quarantine

## Additional Items

- If you are under **quarantine**, negative test results **do not** shorten the length of time
- If clinical site or other components of the course require more stringent policies these must be adhered to (example: student clinicals)
- For more information, please see COVID-19 Training Guide or the [COVID-19 Information Website](#)

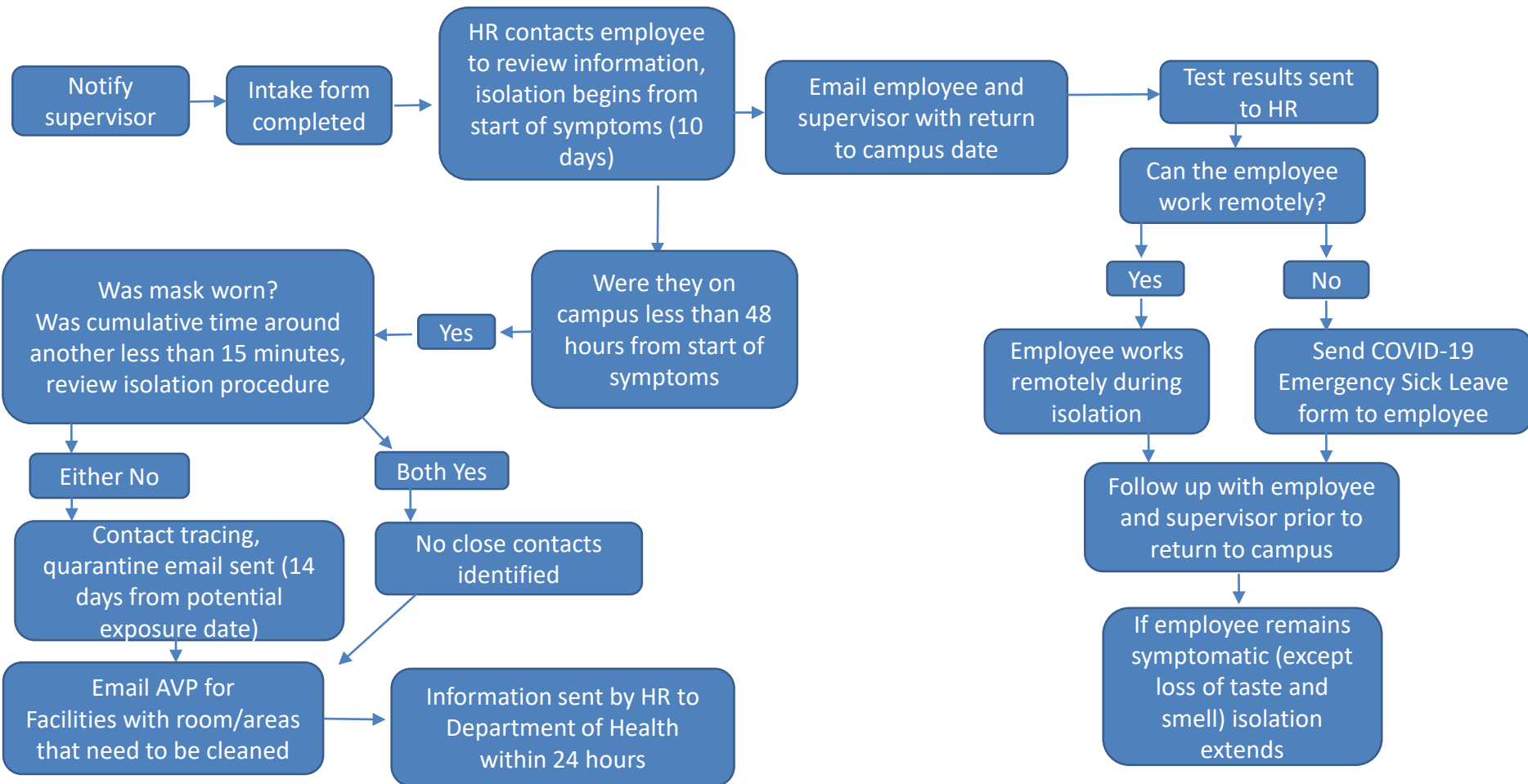
# Scenario: Close contact with household member who has COVID-19 and then contact with another household member who gets COVID-19

Date of additional [close contact](#) with person who has COVID-19 + 14 days = end of quarantine



Please note if your quarantine starts at noon on day 1, then it would end at noon on the last day.

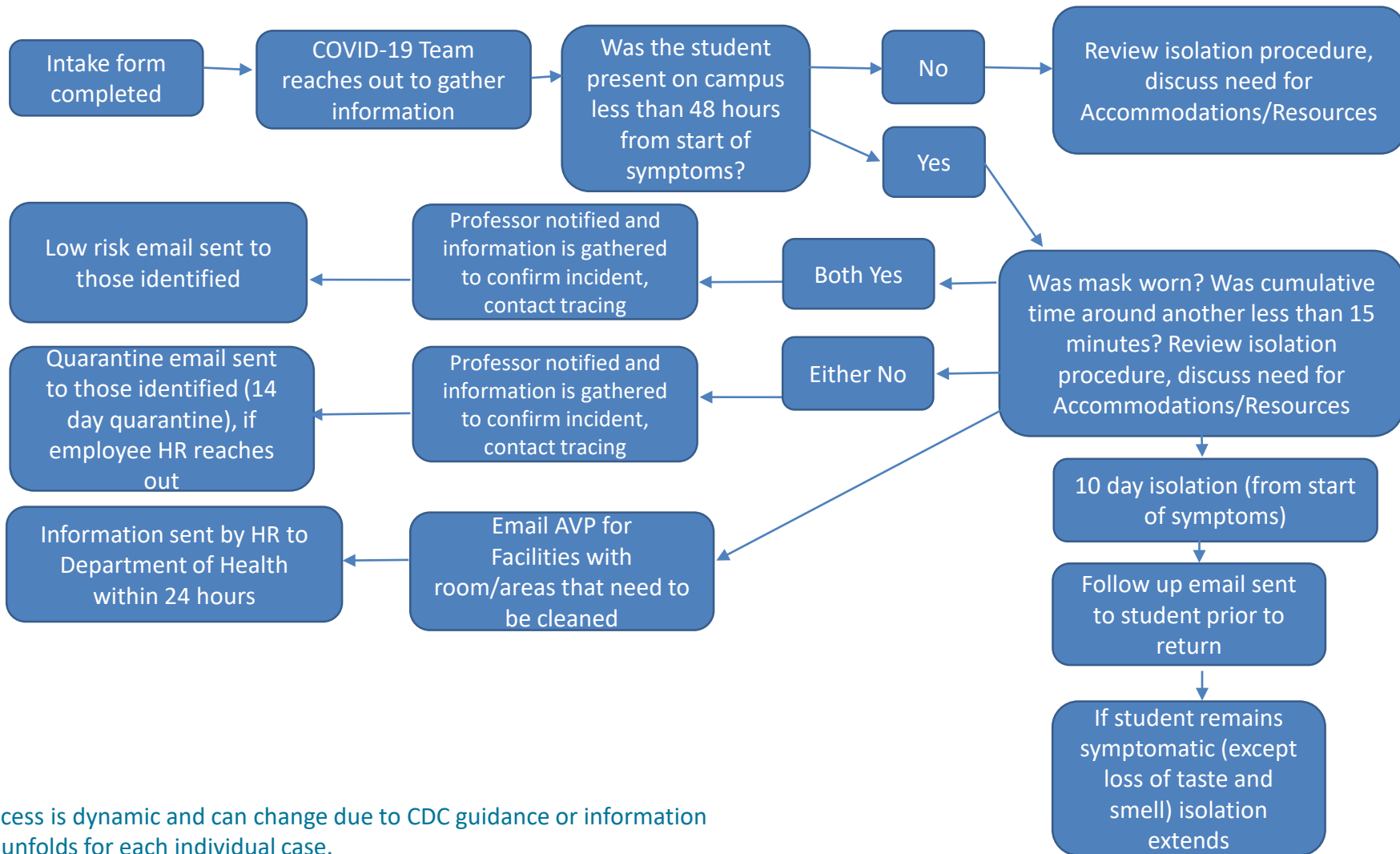
# Employee COVID-19 Reporting Process



\*Process is dynamic and can change due to CDC guidance or information as it unfolds for each individual case.



# Student COVID-19 Reporting Process



\*Process is dynamic and can change due to CDC guidance or information as it unfolds for each individual case.

# Your Role in Helping Keep Our College Safe

- 3 W's to reduce the risk
  - Wear a mask
  - Wash your hands
  - Watch your Distance
- Utilize self-report links ([students](#) and [employees](#))
- Help ensure the use of masks and social distancing (6 feet apart) in and out of the classroom, especially on breaks
- Continue to work with students who are under quarantine or self-isolation
- Have a backup plan in case your course(s) must move to online
- Include COVID-19 Badge Flier in syllabus
- If you have questions or would like consultation, please feel free to reach out
  - Employee – [benefits@fscj.edu](mailto:benefits@fscj.edu)
  - Students – [accomodateme@fscj.edu](mailto:accomodateme@fscj.edu)