



Nursing (R.N.) (Bridge Option for Paramedic and Licensed Practical Nurses) (2335) | A.S. Degree

PROGRAM DESCRIPTION

The Associate in Science (A.S.) in Nursing (R.N.) Bridge Option combines general education and professional courses including lecture, laboratory and clinical education components. Graduates are prepared to function as entry-level practitioners and are qualified to take the National Council for Licensure Examination (NCLEX-RN) to become licensed as a registered nurse (RN). Clinical rotations scheduled in area hospitals and other health facilities are included as part of the program.

A satisfactory score on the Health Education Systems, Inc. Exit examination (HESI EXIT by Elsevier) is required before graduation from the program.

ENTRY REQUIREMENTS

- Hold a current Florida paramedic or practical nurse license
- Submit completed program application by the published deadline
- Application deadline is February 15 each year with classes beginning in the Summer Term
- Forward official college transcripts to the College
- Submit current Health Education Systems, Inc. Admission Assessment (HESI A2/Elsevier A2 Preadmission Test) scores
- Check the catalog to learn about all course and program prerequisites.

FSCJ's R.N. in Nursing is accredited by the Accreditation Commission for Education in Nursing (ACEN), 3343 Peachtree Road NE, Suite 850, Atlanta, GA 30326, (404) 975-5000, acenursing.org.

AT-A-GLANCE

- **72 Credit Hours**
- **Financial Aid Eligible**
- **Selective Access** – Certain prerequisites and criteria must be met to be admitted.
- **Face-to-Face Courses**
- **Program Length:** Five Terms with Two Terms allocated to required general education coursework
- **License:** National Council for Licensure Examination (NCLEX-RN)
- **Embedded Technical Certificate:** Scientific Workplace Preparation T.C.

CONTACT

nursingadn@fscj.edu
(904) 632-3282

Apply to FSCJ online at [fscj.edu/admissions](https://www.fscj.edu/admissions).

The nursing program application can be found at [fscj.edu/2335](https://www.fscj.edu/2335).



FREQUENTLY ASKED QUESTIONS

When can I start?

FSCJ enrolls students year-round.

Application Deadline:

Summer Term – February 15

Where are the educational courses held?

General education courses are offered at any of FSCJ's campuses and centers. The professional core courses are offered at FSCJ North Campus and FSCJ Deerwood Center.

What is the cost of the program?

Many students attending FSCJ qualify for financial aid, which can greatly reduce out-of-pocket expenses. This program is Federal financial aid eligible. *The approximate cost of tuition and fees can be found at fscj.edu/coa.*

Besides tuition and fees, students have to pay for things like living expenses, transportation, supplies and books. Book costs vary widely by program and course selection as well as choice of electives; students are encouraged to budget about \$80 per credit hour.

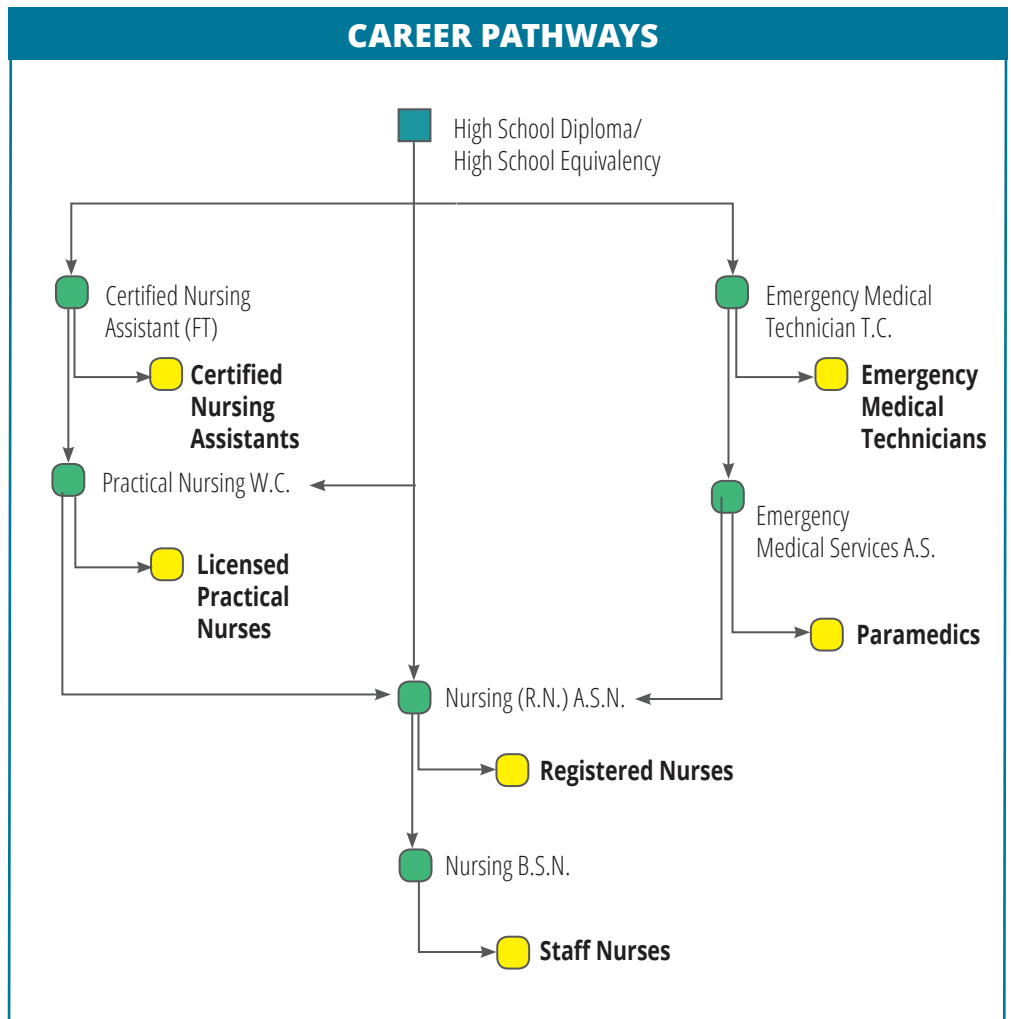
**Tuition reflects Florida resident rates and are subject to change. Certain classes that require labs may have additional fees for lab supplies. Additional fees are published in the class schedule.*

What other programs are related to the field?

Students who have an interest in the Nursing (R.N.) may also be interested in the Nursing (B.S.N.)

Where can I get more information about potential careers?

Research local job opportunities, wage data, career paths and market trends at fscj.emsicareercoach.com.



JOB PROFILE

Registered Nurses

Duval and Nassau Counties

Local employment (2016)	13,070
Number of job openings	526/year
10-year job growth	13%

Expected salaries by area and occupation may be found at bls.gov

Potential employers:

- Baptist Health System
- Flagler Hospital
- Mayo Clinic
- Memorial Hospital
- St. Vincent's Healthcare

As of 2/7/2017