



Early Childhood Education (T100) | B.S. Degree

PROGRAM DESCRIPTION

The Bachelor of Science (B.S.) in Early Childhood Education prepares students to become highly effective pre-kindergarten through grade 3 teachers for public and private schools. The curriculum is designed to provide a practical hands-on approach to understanding early childhood education with courses that focus on providing developmentally appropriate teaching practices to future educators.

ENTRY REQUIREMENTS

- Earn an Associate in Science (A.S.) in Early Childhood Management or Associate in Arts (A.A.) and completion of one prerequisite course for Florida Teacher Preparation programs and have a 2.5 GPA or higher.
- Satisfy the bachelor's degree general admission requirements and submit a bachelor's admissions application
- Pass the Florida Teacher Certification General Knowledge Examination
- Pass a background check
- Provide a copy of official college transcript(s)
- Check the catalog to learn about all course and program prerequisites

AT-A-GLANCE

- **120 Credit Hours**
- **Financial Aid Eligible**
- **Online and Face-to-Face Courses**
- **Limited and Selective Access** - Certain prerequisites and criteria must be met to be admitted.
- **Certification:** Florida Department of Education Professional Educator Certificate (PreK/Primary) and ESOL endorsement

CONTACT

eceinformation@fscj.edu
(904) 633-8182

Apply online at fscj.edu/admissions.

*The B.S. in Early Childhood Education
is approved by the Florida Department of Education.*

FSCJ Florida State College
at Jacksonville

FREQUENTLY ASKED QUESTIONS

When can I start?

FSCJ enrolls students year around.

Application Deadline:

Fall Term – June 1

Spring Term – October 1

Summer Term – February 1

Where are the educational courses held?

General education courses are offered at any of FSCJ's campuses and centers. The professional core courses for this program are offered at FSCJ Downtown Campus and FSCJ Online.

What is the cost of the program?

Many students attending FSCJ qualify for financial aid, which can greatly reduce out-of-pocket expenses. This program is Federal financial aid eligible.

*The approximate cost of tuition and fees is \$12,586.**

Besides tuition and fees, students have to pay for things like living expenses, transportation, supplies and books. Book costs vary widely by program and course selection as well as choice of electives; students are encouraged to budget about \$60 per credit hour.

**Tuition reflects Florida resident rates and are subject to change. Certain classes that require labs may have additional fees for lab supplies. Additional fees are published in the class schedule.*

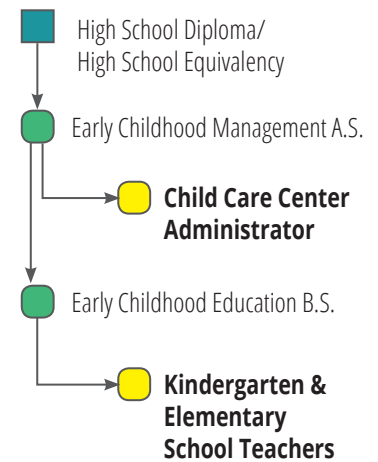
What other programs are related to the field?

Students who have an interest in the Early Childhood Education (B.S.) may also be interested in the Early Childhood Management (A.S.)

Where can I get more information about potential careers?

Research local job opportunities, wage data, career paths and market trends at fscj.emsicareercoach.com.

CAREER PATHWAYS



JOB PROFILE

Duval and
Nassau Counties

Kindergarten and Elementary School Teachers

Local employment 4,264

Number of job openings 360/year

Job growth 7%

Expected salaries by area
and occupation may be
found at bls.gov

Potential employers:

- Bright Horizons Family Solutions
- Chappell Schools
- Duval County Public Schools
- Lutheran Services of Northeast Florida (Head Start)
- Nassau County Public Schools

Source: Indeed.com