

FACULTY AND ADMINISTRATION

(AS OF JANUARY 1, 1976)

CAMPUS DESIGNATION

C—DOWNTOWN CAMPUS
 C—FRED H. KENT CENTER
 DA—DISTRICT ADMINISTRATION
 NC—NORTH CAMPUS
 SC—SOUTH CAMPUS

JAMS, E. BEVERLY	Communications, Speech Therapy	KC
B.S., Georgia State College for Women; M.A., University of Florida		
LFORD, JAMES D.	Director, Industrial and Trade Education	NC
B.S., Tuskegee Institute; M.Ed., Florida A & M University		
LLEN, ELEANOR C.	Art	SC
B.A., The College of William and Mary in Virginia; M.F.A., The George Washington University		
LLEN, WALTER G., JR.	Business	KC
B.S., Auburn University; M.B.A., Ed.D., University of Florida		
LTHOFF, FRANCIS	High School Credit (English)	DC
B.A., M.A., Florida State University		
NDERSON, PATRICK R.	Criminal Justice	SC
B.A., Furman University; M.Div., Southwestern Baptist Theological Seminary; M.A., Sam Houston State University		
RCURI, THOMAS	Accounting	SC
B.S., M.Ed., University of Florida		
XELBERG, ANNE E.	High School Credit (Mathematics)	DC
B.S., Rutgers, The State University of New Jersey		
ADGER, SOLOMON L., III	Counselor	SC
B.S., M.Ed., Florida A & M University; Ed.D., Nova University		
AILEY, CLARE C.	Division Chairman, Natural Sciences, Mathematics and Physical Education	NC
B.S., M.S., Ph.D., University of Florida		
AILEY, WILLIAM F.	Physical Science	SC
B.S., Concord (W. Va.) State College; M.A.T., University of North Carolina at Chapel Hill		
AIN, MARCIA J.	Mathematics	NC
B.A., M.A., Georgia State University		

BAKER, MARTINEZ	Director, College Support Management	D
BALLARD, FRANCIS B. B.S., M.S., Illinois State University	Business	N
BANICKI, ALOIS J. B.S., Western Michigan University; M.A., Eastern Michigan University	Communications	S
BARNETT, CLARICE H. Diploma, Georgia Baptist Hospital School of Nursing, Atlanta, Georgia	Nursing	N
BARRETT, LAWRENCE W. Vocational Certificate, State of Florida	Plumbing and Pipe Fitting	D
BATES, JAMES W. A.B., Birmingham Southern College; M.S.L.S., University of North Carolina at Chapel Hill	Director, Learning Resources	N
BEARDEN, JOAN L. B.A., Tulane University; M.S.L.S., Louisiana State University and Agricultural and Mechanical College	Librarian	K
BEASLEY, GEORGIA B. B.S., M.S., Northwestern State University (La.)	Child Care Services	N
BEAUDOIN, ADRIEN P. B.Ed., M.Ed., Keene (N.H.) State College; Ph.D., University of Alabama at Tuscaloosa	Communications	K
BEERBOWER, DALE T. B.S., Jacksonville University; M.S., Florida State University	Director, Criminal Justice and Fire Science	S
BENNETT, DELPHIA M. B.S., M.Ed., Florida A & M University	High School Credit (Science)	D
BERTSCH, JEFFREY C. B.S.F.S., Georgetown University; M.S., Florida State University	Social Science	S
BEST, CONSTANCE J. B.S., North Carolina College; M.S., Indiana University	Nursing	N
BLACKWELL, MELBOURNE D., JR. B.S., M.M., East Carolina University; Ph.D., Florida State University	Music	S
BLADEL, DIANE N. B.Ed., University of Miami; M.A., Florida State University	Communications	K
BLADEL, JOHN P. B.A., University of Notre Dame; M.B.A., University of Miami	Business	S
BLAND, NEAL D. B.S., Morehouse College	High School Credit (Mathematics)	D
BLAY, MICHAEL S. B.S., M.Ed., University of Florida	Accounting	S

LESH, PAUL K. B.S., Syracuse University	Assistant Director, Career Education	SC
LEVINS, BYRON C. Vocational Certificate, State of Florida	Automotive Emission Control	DC
OATENG, ALFRED K. B.S., M.A., Andrews University (Mich.); Ph.D., Purdue University	Developmental Education	NC
OHANING, WILSON H.	Director, Auxiliary Services	DA
OHLER, GEORGE S. B.S., M.S., Florida State University	Social Science	NC
ONNEVILLE, BRUCE V. B.S., B.A., University of Florida	Director, Internal Accounting	DA
ORDEAUX, RICHARD H. B.A., M.A., Florida State University	Communications	KC
ORDEN, JUNE C. B.S.N., M.S.N., University of Alabama	Nursing	NC
ORNE, WILLIAM G. Vocational Certificate, State of Florida	Machine Shop	DC
OSWELL, ERNESTINE D. B.S., Tuskegee Institute; M.S., Florida State University	Nursing	NC
OUCHER, FREDERICK H. B.A., University of Tulsa; M.A., Teachers College, Columbia University; M.Ed., University of Florida	Physical Science	SC
OUCHER, SARA P. B.A., Lake Forest College; M.A.T., Jacksonville University	Humanities	SC
OWMAN, LUTHER J., SR. A.B., Indiana University; M.A.E., University of Florida	Mathematics	KC
OYLES, BILLY O. B.A., University of Texas at El Paso; M.J., University of Texas at Austin	Associate Director, Information Services and Publications	DA
RADFORD, BARBARA R. B.S., Florida State University; M.Ed., University of Florida	Secretarial Science	SC
RATCHER, HAROLD L. Vocational Certificate, State of Florida	Building Maintenance Mechanics	DC
RAY, HAROLD E. Vocational Certificate, State of Florida	Auto Trim and Upholstery	DC
REDA, ANTHONY Vocational Certificate, State of Florida	Automotive Mechanics	DC
RICKELL, GRANT R. B.E., Western Illinois University; M.S., Purdue University	Communications	SC
RINKLEY, GLORIA J. B.S., Stetson University; M.A., Presbyterian School of Christian Education	Business	NC
RINKLEY, HARRY J. B.S.A., M.S.A., University of Florida	Biological Science	KC

BROWN, DANIEL D. B.S., University of Maryland; M.Ed., Ed.S., University of Florida	Social Science	S
BROWN, HORACE A.A., North Florida Junior College; B.S., Florida A & M University; M.S., Southern University and A & M College	Physical Science	K
BROWN, MARIAN T. A.B., Bennett College; M.M.E., D.M.E., Indiana University	Humanities	S
BROWNETT, THELMA D. B.F.A., Wesleyan Conservatory, Macon, Georgia; M.F.A., University of Georgia	Art	S
BROWNING, THOMAS G. B.S.B.A., M.Ed., University of Florida	Director, Business Related Programs	N
BRUCE, JOHNNY W. B.S.E., M.S.E., Arkansas State University	Biological Science	K
BRUNNER, ROBERT J. B.A., Heidelberg College; M.A., University of Oklahoma; M.S., Syracuse University	Librarian (Media)	D
BRYANT, EZEKIEL W. B.S., Bethune-Cookman College; M.Ed., Boston University; Ed.D., Nova University	Provost	N
BULLARD, WILLIE B.S., Bethune-Cookman College	High School Credit (Social Science)	D
BURNETT, JUDITH J. B.S., M.Ed., University of Southern Mississippi	High School Credit (Business)	D
BURROWS, JIMMIE L. B.S., Tennessee Technological University; M.A., George Peabody College for Teachers	Business Education	N
BURROWS, WILLIAM D. B.M.E., University of Florida; M.A., University of Iowa; Ph.D., University of Alabama at Tuscaloosa	Data Processing	N
BURT, JOE E. B.M., Samford University; M.M., Northwestern University	Humanities	S
CACCIOLA, ROSEANN M. B.A., Tennessee Wesleyan College; M.A., Ph.D., Vanderbilt University	Director, Faculty Affairs	C
CALDWELL, JOSEPH H. B.S., M.S., Florida State University; Ed.S., University of Florida; Ed.D., Nova University.	Dean, Student Development	S
CALLENDER, JAMES M. A.A., Lamar University; B.S., United States Naval Academy; M.S., The George Washington University; Ph.D., University of Florida	Assistant to the Vice President for Campus Operations	C
CARMICHAEL, BOBBY J. B.B.A., Eastern New Mexico University; B.B.A., University of North Florida; M.B.A., University of Arkansas	Accounting	S

CARTER, ALPHONSO B. B.S., Florida A & M University; M.S., Rutgers, The State University of New Jersey	Mathematics	NC
CARTER, BETTY A. B.A., Goucher College; M.Ed., University of Florida	Individualized Studies	SC
CARTER, DELPHENIA M. B.S., M.Ed., Florida A & M University	Reading	DC
CASWELL, CHARLOTTE Y. B.A., Jacksonville University; M.Ed., University of Florida	Librarian	KC
CHANDLER, GWENDOLYN J. B.S., Alabama State University; M.S., Catholic Univer- sity of America	Librarian	SC
CHRISTOPHER, MILDRED M. B.S., Edward Waters College	High School Credit (English)	DC
CHRISTOFOLI, LUTHER B. A.B., Newberry College; M.A., Auburn University; Ed.D., University of Florida	Dean, Academics	NC
CLELAND, JAMES M. B.S., Presbyterian College; M.S., Clemson University	Director, General Studies	DC
CLELAND, SHARON E. B.S., M.S., University of Tennessee at Knoxville	Communications	NC
COBB, ELIZABETH M. B.S., Edward Waters College; M.Ed., Florida A & M University; Ed.D., Nova University	Dean, General Studies	DC
COLE, RICHARD L. B.S., Edward Waters College	Business	DC
CONRAD, CRAIG M. B.A., M.A., University of South Florida	Physical Science	SC
COOK, LENDA H. B.S., West Texas State University; M.A.T., University of North Carolina at Chapel Hill	Biological Science	NC
COOK, MARY S. B.S., M.A.C.T., Auburn University	Child Care Services	NC
CORBITT, SARAH C. B.S., M.Ed., Florida A & M University	High School Credit (Natural Science)	DC
CORDIER, DOUGLAS C. B.S., M.A., Eastern Kentucky University	Physical Education	NC
COSBY, JON P. B.A., M.A., Western Kentucky University; Ed.D., Nova University	Dean, Academics	SC
COTTON, H. D. B.S., Florida Southern College; M.A., Middle Tennessee State University; Ed.D., University of Alabama at Tuscaloosa	Dean, Student Development	NC

COULSON, DONNA C. B.A., King College; M.S., Florida State University	Librarian	M
COX, ERNESTINE B. B.S., M.Ed., Florida A & M University	Adult Basic Education	C
CROCKETT, JIMMY R. B.S., Florence State University; M.A., Middle Tennessee State University	Physical Science	S
CRUSE, VERA W. Diploma, Brewster Methodist Hospital School of Nursing, Jacksonville, Florida; B.S., Florida A & M University	Nursing	N
CRUTCHFIELD, FLORENCE P. A.B., University of North Carolina at Chapel Hill	High School Credit (Mathematics)	C
CUSACK, JOSEPH B. III B.S., East Tennessee State University; M.A., Appalachian State University	Associate Dean, Career and Adult-Continuing Education	C
DANIEL, JOAN M. B.A., Morris Brown College	High School Credit (English)	C
DANIEL, RALPH C., JR. B.A., M.A., University of South Florida	Counselor	N
DAVID, JAMES B. B.S.Ch.E., M.S., University of Florida	Physical Science	N
DAVIDSON, DAVID L. B.A.Ed., M.Ed., University of Mississippi	Social Science	F
DAVIS, BARBARA G. B.S.N.Ed., DePaul University; M.S., Case-Western Reserve University	Nursing	N
DAVIS, ELIZABETH W. B.S., Florida State University	Home Economics	F
DAWSON, WANDA E. B.A., Bethune-Cookman College; M.A., Florida State University	Communications	F
DeGOURSEY, LEO R. Vocational Certificate, State of Florida	Printing and Graphic Arts	F
DELLINGER, HARRY V. B.S., M.A., Western Carolina University; Ed.D., University of Southern Mississippi	Business Related	F
DeLOACH, HENRY Vocational Certificate, State of Florida	Automotive Emission Control	C
DEMERY, CHERRILYNN B.A., Florida A & M University; M.S., Atlanta University	Librarian	F
DENNIS, HUERTA B.S., M.Ed., Florida A & M University	Director, Related Occupational Programs	C
DENSON, WILLIAM H. III B.A., Florida State University; M.S., University of Southern Mississippi	Communications	F
DeSIMONE, MARILYN N. B.A., Stetson University; M.A.T., Jacksonville University	Communications	F

ETERS, MARCELLA D.	Physical Education	SC
B.S., State University of New York College at Cortland; M.A., Teacher's College, Columbia University		
EWERD, GAY E.	Dental Hygiene	NC
B.S., Marquette University; M.S., University of Wisconsin at Milwaukee		
IFFIE, GRANVILLE P.	Psychology	KC
B.S., University of Maryland, M.Ed., Ed.S., Ed.D., University of Florida		
IGGETT, HAROLD W.	Air Conditioning, Refrigeration and Heating	NC
Vocational Certificate, State of Florida		
OBJY, WILLIAM C.	Engineering	SC
B.S., United States Naval Academy; B.S.E.E., United States Naval Postgraduate School; M.S., Rochester Institute of Technology; Ed.S., University of Florida		
ODSON, HARRIETTE Y.	Communications	KC
A.A., North Florida Junior College; B.A., M.A., Florida State University		
OLLINGER, RICHARD E.	Director, Engineering and Related Education	NC
B.S., United States Naval Academy; M.S., Ed.S., Florida State University		
ONNELLY, VIRGINIA A.	Nursing	NC
B.S., Boston College; M.S., Catholic University of America		
OUGLASS, CHARLES G.	Social Science	SC
B.A., Gettysburg College; M.A.T., Rollins College		
REHER, DEBORA A.	Humanities	SC
B.A., M.A., New York University		
ROST, KENNETH W.	Physical Education	SC
B.S., M.S., Louisiana State University and Agricultural and Mechanical College		
RUM, JERRY B.	High School Credit (Social Science)	DC
A.B., Lenoir Rhyne College; M.A., Appalachian State University; Ed.D., University of Alabama at Tuscaloosa		
JMBLETON, DUANE D.	Social Science	SC
B.S., University of Wisconsin; M.S., Syracuse University; Ed.D., University of Georgia		
JNAGAN, MARIE E.	Librarian	SC
B.S., M.S., Florida State University		
YER, JOHN L.	Business	SC
B.S., Springfield College; M.S., Syracuse University		
MONSON, BEN G.	Social Science	NC
B.A., M.S., University of Mississippi		
LLIS, PATRICIA	Individualized Studies	SC
B.S., Boston State College; M.Ed., College of William & Mary in Virginia		
NG, CHOOHUA J.	Data Processing	NC
A.A., Hiawassee College; B.S., Tennessee Wesleyan College; M.M., University of Tennessee at Knoxville		

ESKRIDGE, NORFLEET W. B.S., M.A., Appalachian State University	Physical Education	KK
EVERETT, INDINESE C. Vocational Certificate, State of Florida	Cosmetology	KK
FARMER, JOHN E. B.A., M.Ed., University of Florida; Ed.D., Nova University	Dean, Student Development	KK
FARRIS, JULIAN E. B.A., Jacksonville University; M.A., Florida State University	Humanities	SC
FARSHING, DONALD, JR. B.S., United States Naval Academy; B.S.A.E., United States Naval Postgraduate School; M.S., Stevens Institute of Technology	Engineering	NC
FEARS, RUBEL G. B.A., M.A., Mississippi State University	Communications	NC
FERRY, STELLA V. Vocational Certificate, State of Florida	Cosmetology	KK
FINCH, OLIVER R. B.S.E., Georgia Southern College; M.A., George Peabody College for Teachers; Ph.D., University of Alabama at Tuscaloosa	Provost	SI
FINEGOLD, MIRIAM T. A.A., B.A., Jacksonville University; M.S., Florida State University	Nursing	NI
FISHER, LINDA M. A.B., Wheaton College; M.A., Boston University	Humanities	KI
FITZGERALD, EDWARD E. B.A., M.S., Louisiana State University and Agricultural and Mechanical College	Director, Learning Resources	KI
FLEMING, HARRY E. B.S., M.S., M.Phil., University of Southern Mississippi	Social Science	S
FLOURNOY, BEAULAH M. B.A., Bethune-Cookman College; M.A., University of Florida	Social Studies	D
FLYNN, AUDREY L. B.S., M.A., Florida State University	Child Care Services	N
FOWLER, WARREN M. Vocational Certificate, State of Florida	Air Conditioning, Refrigeration and Heating	N
FRIEDMAN, MARSHALL R. B.S., University of Pennsylvania; M.Ed., Ed.S., University of Florida	Business	S
FRITTS, MILDRED F. B.S., Auburn University; M.A.T., Jacksonville University	Communications	N
FROBERG, JAMES W. B.S., M.S., Florida State University	Librarian (Media)	S
GAGLIARDI, HENRY M. B.S., St. Louis University; M.S., Florida State University; D.D.S., St. Louis University	Director, Dental Programs	N

GALLON, DENNIS P.	Business	KC
B.S., Edward Waters College; M.S., Indiana University at Bloomington; Ed.S., Ph.D., University of Florida		
GARRETT, ROBERT I., JR.	Social Science	SC
B.S., Middle Tennessee State University; M.A., George Peabody College for Teachers		
JAY, ELEANOR J.	Counselor	NC
B.S., M.A., Florida A & M University		
GEIS, LAWRENCE R.	Assistant to the President for Business and Industry Relations	DA
B.S., United States Naval Academy		
GENTRY, ROBERT B., JR.	Division Chairman, Communications and Humanities	KC
B.S., M.A., University of Tennessee at Knoxville		
GESELL, RICHARD C.	Business	SC
M.A.T., Rollins College; J.D., University of Wisconsin at Madison		
GIBSON, LOIS D.	Nursing	NC
B.S., Tuskegee Institute; M.S., Boston University; Ed.D., Nova University		
GIMBEL, RICHARD W.	Humanities	NC
A.B., Princeton University; M.A., Middlebury College		
GIRARDEAU, MATILDA L.	Biological Science	NC
B.S., North Carolina College; M.A.T., University of North Carolina at Chapel Hill		
GLEIM, JAMES K.	Physical Science	KC
A.B., Indiana University; M.A., Georgetown University; Ph.D., University of Pennsylvania		
GODBOLD, GEORGE F.	Welding	DC
Vocational Certificate, State of Florida		
GOLIGHTLY, THELMA E.	Communications	NC
A.B., Mary Baldwin College; M.A., University of Wisconsin at Madison		
GOOCH, ANN M.	Humanities	NC
B.M.E., Florida State University; M.Ed., University of Florida		
GRANLUND, ROY D.	Mathematics	SC
B.S., Jacksonville University; M.Ed., University of Florida		
GRANT, ALICE W.	Developmental Education	NC
A.B., M.Litt., University of Pittsburgh; Certificate in African Studies, Northwestern University		
GRANT, ANTONIA M.	Communications	SC
B.A., Florida A & M University; M.A., Florida State University		
GRAY, HORTENSE W.	Counselor	KC
B.A., Fisk University; M.A., Columbia University		
GREEN, JULIUS C.	Director, Information Services and Publications	DA
A.B., University of North Carolina at Chapel Hill		

GREEN, KIPTAS L. B.S., Edward Waters College; M.Ed., University	Counselor Florida A & M	DI
GREEN, LAWTON R. B.S., M.A., Florida State University	Philosophy	KI
GREENE, CURTIS P. B.S., M.A., Ball State University	Psychology	NI
GREENMAN, GENE B. Diploma, St. Luke's School of Nursing, Florida	Nursing Jacksonville,	NI
GREER, ELLA M. A.S., Louisburg College; B.S.N., Duke University; M.S., Florida State University	Nursing	NI
GRIEGER, EDWARD L. B.S., Michigan State University; M.B.A., University; M.S., Wayne State University	Business Florida Atlantic	NI
GRIFFEY, ELIZABETH B. B.A., Florida State University; M.A., University	Communications Arizona State	SI
GRIFFEY, LARRY R. B.S., M.A., Austin Peay State University	Mathematics	SI
GRIFFIN, SEVIER P. III B.S.P.E., M.P.H., University of Florida; University	Director, Learning Resources Nova	DI
GRIMES, THEODORE R. B.M., Eastman School of Music, University of Rochester; M.L.S., Syracuse University	Librarian	N
GRISWOLD, ARDIS G. Diploma, St. Alphonsos Hospital School of Nursing, Boise, Idaho	Nursing	N
GUSKY, FRANK C. A.B., Findlay (Ohio) State College; M.Ed., University of Florida	High School Credit (Social Science)	D
HADWIN, ALICE R. B.A., Saint Mary College, Xavier, University of Florida; Ed.D., Nova University	Counselor Kansas;	N
HADWIN, DAN W. B.A., Louisiana Tech University; M.Ed., University of Florida; M.Ed., Louisiana State University and Agricultural and Mechanical College; Ed.D., Nova University	Counselor	S
HALEY, AIMEE C. B.S., Jacksonville University; C.P.A., State of Florida	Director, Business Affairs (Kent Center)	D
HALL, DOLORES L. B.S., M.Ed., Florida A & M University	Mathematics	N

HALL, JENE	Mathematics B.S.Ed., Louisiana Tech University; M.A., Louisiana State University and Agricultural and Mechanical College	KC
HALLER, MARTHA	Engineering A.A., Paducah Community College, Paducah, Kentucky; B.S., University of North Florida	NC
HALLORAN, PAUL	Distributive and Mid-Management Education B.A., Jacksonville University; M.S., State University of New York Maritime College	KC
HAMMOND, CARRIE B.	Nursing Diploma, Brewster Methodist Hospital School of Nursing, Jacksonville, Florida	NC
HAMMOND, MARY M.	High School Credit (Reading) B.S., Florida Memorial College; M.Ed., Florida A & M University	DC
HANLEY, JAMES R., JR.	Physical Science B.S., University of Rhode Island; M.S., University of Illinois	SC
HARDIN, PAULA B.	Nursing Diploma, The Good Samaritan Hospital School of Nursing, Lexington, Kentucky	NC
HARIMA, HECTOR	Biological Science B.S., M.S., Ph.D., University of Alabama at Tuscaloosa	SC
HARMAN, PAULINE J.	Psychology A.B., Marshall University; B.S., M.S., University of Tennessee at Knoxville	KC
HARPER, MARY L.	Home Economics B.S., Florida A & M University; M.S., Florida State University	DC
HARRIS, MYRTIS B.	Nursing B.S., Florida A & M University; M.S., Florida State University	NC
HART, SHERMAN C., JR.	Air Conditioning, Refrigeration and Heating Vocational Certificate, State of Florida; Diploma, Air Conditioning/Refrigeration, Florida Industrial Commission	DC
HARTNIG, LYNDA	Business B.S., M.Ed., University of Florida	NC
HARTSHORN, DAVID L.	Director, Student Financial Aid B.S., United States Naval Academy; M.A., The George Washington University	KC
HARTWELL, ROSANNE R.	Director, Continuing Education B.S., Florida State University; M.Ed., University of Florida	DC
HASKEW, DONALD C.	Mathematics B.S.E., Central Arkansas University; M.Ed., University of Arkansas	SC
HATCHER, HAROLD S.	Assistant Director, Personnel/ Payroll	DA

HAYNES, JOHN A. B.A., M.Ed., University of Florida	Psychology	S
HEATH, WILBUR G. B.A., Atlantic Christian College; M.A., Appalachian State University	Developmental Education	N
HENDERSON, THOMAS M. Vocational Certificate, State of Florida	Industrial Electronics	D
HENDRICKS, VIRGINIA L. A.B., University of Notre Dame; M.A., Case-Western Reserve University	High School Credit (English)	D
HILL, JONATHAN H. B.S., Stetson University; M.Ed., University; Ed.D., Nova University	Director, Student Activities Florida Atlantic	N
HODGKINS, H. B. B.A., M.Ed., University of Florida	Director, Business Affairs (Downtown Campus)	D
HOLLAND, EDNA A. B.A., M.A.T., Jacksonville University	Communications	S
HOLLAND, GILBERT W. Vocational Certificate, State of Florida	Major Appliance Repair	C
HOLMES, BILLIE J. B.S., Edward Waters College; M.Ed., University	Adult Basic Education Florida A & M	C
HOLZENDORF, JOYCE G. B.S., Florida A & M University; M.A., Central University	Social Science North Carolina	N
HOOP, IRIS C. B.S., M.S., Indiana State Teachers College	Communications	T
HOUGHTON, MICKIE J. Diploma, St. Luke's Hospital School of Nursing, Jacksonville, Florida; B.S., University of North Florida	Nurse Assistant	N
HOWARD, MARK S. B.A., M.F.A., Florida State University	Art	T
HOWARTH, CHESTER D. B.S., Massachusetts State Teachers College; M.S., Florida State University	Director, Distributive and Mid-Management Education	I
HOWELL, JOHN N. B.S., United States Military Academy; M.A., The George Washington University	Mathematics	
HUTCHINGS, PATRICIA W. A.A., Lake City Community College; B.S., M.A., Florida State University	Communications	
HUTCHINSON, JOHN M., JR. B.S.M.E., Auburn University; M.S., University; Ed.S., Florida State University	Engineering Florida State	
HUTSON, CALVIN E. Vocational Certificate, State of Florida	Cabinetmaking	

ISRAEL, KENNETH D. B.A., Berea College; M.A., George Peabody College for Teachers; Ph.D., University of Southern Mississippi	Social Science	SC
JACKSON, LUCINDA G. B.S., Edward Waters College; M.Ed., Florida A & M University	Psychology	KC
JAMES, ISIAH, JR. B.S., M.S., Florida Atlantic University	Director, Developmental Education	DC
JAYASWAL, MANINDRA C. B.Sc., Allahabad (India) University; M.S., University of Florida	Chemistry	NC
JENKINS, ETHEL L. A.A., Jacksonville University; B.S., University of Florida; M.A., Appalachian State University; Ed.D., Nova University	Psychology	SC
JOCA, JOHN G. B.S., M.A.Ed., University of Florida	Counselor	DC
JOHNSON, FRANK Vocational Certificate, State of Florida	Automotive Mechanics	DC
JOHNSON, GEORGE B.S., Edward Waters College	Developmental Education	DC
JOHNSON, INEY P. B.S., Jacksonville University; M.Ed., University of Florida	Division Chairman, Mathematics and Sciences	KC
JOHNSON, MARY RUTH B.S., Tennessee Technological University; M.A., Appalachian State University	Counselor	NC
JONES, DAVID Q. B.A., Albion College; M.A., University of Michigan	Social Science	SC
JONES, EDNA M. B.S., Florida State University; M.S.N., University of Alabama	Nursing	NC
JONES, MARVIN M. B.S., M.S., Purdue University	Engineering	NC
KADEN, MAXINE M. B.A., Stetson University; M.Ed., University of Florida	Counselor	DC
KEENAN, HARRY C. B.A., University of Florida	Adult Basic Education	DC
KEHRT, IRENE M. B.A., Hunter College of the City University of New York; M.A., University of Michigan	Physical Education	KC
KELLY, JOSEPH D. B.S.E., M.A.E., Kent State University	High School Credit (English)	DC
KENNEDY, ROBERT A. A.B., Millsaps College; B.S., University of Alabama; M.A., George Peabody College for Teachers; Ed.D., Florida State University	Humanities	NC
KERLEY, DOUGLAS W. B.M., M.M., Florida State University	Music	SC

KEY, ERSKINE C. B.S., Troy State University; M.S., Ed.D., George Peabody College for Teachers	Social Science	SC
KILGORE, CHARLES F. B.A., Florida Christian College; M.Ed., University of Tennessee at Chattanooga; M.A., Ph.D., Emory University	Social Science	KC
KING, DOROTHY P. B.S., M.Ed., Florida A & M University	Biological Science	SC
KING, IONA H. B.S., Edward Waters College	Child Care Services	NC
KING, MABLE P. A.B., Johnson C. Smith University; M.Ed., Florida A & M University	Librarian	DC
KIRKLAND, ARTHUR C., JR. B.M.E., M.M.E., Florida State University	Music	SC
KITCHINGS, EARL S. B.S., Florida A & M University; M.A., Columbia University	Dean, Student Development	DC
KOLESAR, JOHN C. B.S., St. Joseph's College, Rensselaer, Indiana; M.S., Southern Illinois University	Physical Science	NC
LA BELLO, ANTHONY J. B.S., St. Francis College; M.Ed., University of North Florida	Mathematics	DC
LANAHAN, RODGER P. B.A., Queens College, City University of New York; M.A., New York University	Fire Science	SC
LAND, MARY ELIZABETH A.B., University of North Carolina at Chapel Hill; M.A., East Carolina University	Music	SC
LANE, ROBERT W. B.S., University of Illinois; M.S., South Dakota School of Mines and Technology	Physical Science	SC
LaPRADE, RAYMOND C. B.S., Florida State University	Engineering	NC
LARKINS, IRIS D. B.S., Edward Waters College; M.Ed., Florida A & M University	Adult Basic Education	DC
LEE, ETHEL R. B.S., Duke University; M.A., Jacksonville University	Nursing	NC
LEE, MAY F. B.S., Edward Waters College; M.A.T., Indiana University	Social Science	NC
LENNERTZ, MILDRED A. B.S.H.E., University of Georgia; M.Ed., University of Mississippi; Ed.D., Nova University	Director, Home Economics Education	KC
LaVASSEUR, MICHAEL LEE B.A., M.A., University of South Florida	Social Science	NC

LEWIS, WARREN LEE A.A., Wilbur Wright Junior College (Chicago); B.S.M.E., Illinois Institute of Technology	Drafting and Related Trades	NC
LILLY, FRANCES H. B.S., M.S., Florida State University	Nursing	NC
LISTER, HARRY M. B.A., Arkansas Polytechnic University; M.A., Texas Christian University	Social Science	SC
LLOYD, ROGER M., JR. B.S., East Tennessee State University; M.S., University of Mississippi	Biological Science	SC
LOCKETT, CORNELIUS R., JR. B.S., M.Ed., Florida A & M University	Director, High School Programs and External Centers	DC
LOFTUS, EDSON G. B.A., Jacksonville University; M.A.T., University of Montevallo, Montevallo, Alabama	Physics	NC
LOFTUS, JOHN R., SR. B.S., Florida State University; M.Ed., A.M.E., University of Mississippi	Director, Evening Campus	DC
LUBAS, HELEN S. B.S., M.S., Florida State University	Nursing	NC
LUCAS, WILLIE LEE B.S., Tennessee State University; M.A.L.S., University of Michigan	Librarian	NC
LUCK, CAROLYN E. B.S., M.Ed., University of Florida	Director, Records	DA
LUTZ, JUDITH G. B.A., University of Florida; M.C.Ed., Presbyterian School of Christian Education	Director, Child Care Services	NC
LYONS, WILLIAM E., SR. B.A., Harvard University; M.A., University of Florida	Distributive and Mid- Management Education	KC
MAAFO, GLADYS L. B.S., North Carolina College; M.S., University of North Florida	Nursing	NC
MacDONALD, JOHN M. B.S., M.A., East Tennessee State University	Communications	KC
MAHAN, RICHARD M. A.A., Orlando Junior College; B.S., Florida Technological University; M.S., University of Florida	Biological Science	NC
MALLORY, ESCHOL M. B.S., M.Ed., University of Florida	Chemistry	NC
MALLOY, RACHEL H. B.S., Edward Waters College; M.Ed., Florida A & M University	High School Credit	NC
MARTIN, WILLIAM S., JR. B.S., William Carey College; M.A., University of Southern Mississippi	Social Science	SC

MARVES, RAYMOND C. B.S., Georgia Southern College; M.S., Florida State University	Accounting	KC
MASSEY, MURPHEY W., JR. B.A., Emory University; Ph.D., University of Georgia	Chemistry	NC
MAYES, JIM L. B.A., M.A., University of Arkansas	Social Science	KC
McBRIDE, LUELLA W. B.S., M.Ed., Florida A & M University	Counselor	SC
McBRIDE, RICHARD B.S., Florida A & M University; M.Ed., Florida State University	Automotive Mechanics	DC
McCANDLESS, MARY R. B.S., M.Ed., Ohio State University	Director, Nursing	NC
McCLURE, SARAH E. A.S., Florida Junior College at Jacksonville	Medical Assisting	NC
McCOY, PAUL O. B.S., Kansas State Teachers College; M.S., Louisiana State University and Agricultural and Mechanical College	Director, Military Programs	KC
McCURLEY, LYNDELE E. B.S.E., Bethel College; M.S.E., Arkansas State University	Physical Education	SC
McDONALD, MARYANNA S. B.S.C., M.Ed., University of Mississippi	Counselor	KC
McELREATH, SUSAN D. A.B., Wesleyan College; M.S., Georgia State University	Biological Science	NC
McFARLAND, BILL W. B.A., M.A., University of Arkansas	Director, Experiential Learning	SC
McGRATH, WILLIAM F. B.S.E.E., United States Naval Postgraduate School; B.S.M.E., Auburn University; M.A.T., Jacksonville University	Mathematics	SC
McLAIN, THELMA T. B.S., M.S., M.Ed., Florida A & M University	Business	DC
McMILLAN, PAUL M. B.A., M.A., East Texas State University	Social Science	NC
MEDLEY, CAROL L. B.S., University of Washington	Dental Hygiene	NI
MELLIN, HARRY S. B.S., Purdue University; M.A., Ball State University	Mathematics	KI
MERRIAM, CHARLES S. B.S., M.S., Florida State University	Dean, Career Education	KI
MILEY, VERONA B.S., Stetson University; M.A., Appalachian State University	Counselor	KI
MILLER, CARL K., JR. B.S., M.S., Pennsylvania State University; Ed.D., Florida State University	Dean, Career Education	S

MILLER, KERMIT C. B.A., M.Ed., Ph.D., University of Mississippi	Provost	KC
MILLER, LILLIAN W. B.S., East Carolina University; M.S., University	Biological Science Ph.D., Purdue	SC
MILLS, ERIC R., JR. B.S.A., University of Florida; M.B.A., Mississippi, Ed.S., Ed.D., University of Florida	Dean, Career and Adult- Continuing Education	DA
MINOGUE, BERNARD B. B.S., University of Connecticut; B.S.N., University; M.Ed., Ed.D., North Texas State University	Associate Dean, Health Related Technology	NC
MOLENDI, JOSEF L. B.A., M.A., Marquette University	Communications	KC
MONTI, LARRY H. B.S., Newberry College; M.A., George Peabody College for Teachers	Physical Education	KC
MOORE, CAROL S. B.S.P.E., M.A., University of Mississippi	Communications	SC
MORAN, EMMA L. B.S., West Virginia State University; M.A., University	Business	SC
MORELAND, HENRY L. B.S., Pembroke (N.C.) State University; M.S., Purdue University; Ed.D., University of Mississippi	Psychology	KC
MORRIS, JOSEPH W. A.A., Chipola Junior College; B.A., M.S., University	Social Science	KC
MOSS, BEVERLY C. B.S., Western Carolina University; M.A., Duke University	Psychology	NC
MULLINS, JOHN Q. B.S., M.S., University of Tennessee at Knoxville	Biological Science	SC
MUMFORD, JENNIFER B. B.S., M.S., Florida A & M University	Individualized Studies	DC
MUNDELL, RALPH P. Vocational Certificate, State of Florida	Welding	NC
MURRAY, BOBBIE L. B.S., Florida State University; M.S.E., North Carolina at Chapel Hill	Physical Science	KC
MURRAY, CHARLES L. B.S., M.Ed., University of Florida	Accounting	SC
MURRAY, RUDOLPH Vocational Certificate, State of Florida	Welding	DC
MYERS, JAMES R. B.A., Jacksonville University; M.S., University	Dean, Occupational Education	DC

NAPIER, EDGAR C. B.S., William Carey College; M.C.S., Ed.D., University of Mississippi	Provost	DC
NELSON, GREGORY B. B.S., Jacksonville University; M.S., Florida Institute of Technology	Business	SC
NesSMITH, WILLIAM C. B.S., M.Ed., University of Florida	Social Science	NC
NEZZO, BARBARA A. B.A., College Misericordia, Dallas, Pennsylvania; M.L.S., University of Pittsburgh	Librarian	KC
NICHOLSON, ROSE M. A.A., Sante Fe Community College; B.S., University of Florida; M.B.A., University of North Florida	Business	SC
NORMAN, HELEN V. B.S., Edward Waters College	Developmental Education	DC
NORRIS, JAMES S. B.A., Pennsylvania State University; M.A.T., Jacksonville University	Business	NC
OGILVIE, SARA L. A.B., Wesleyan College; M.Ln., Emory University	Librarian (Technical Services)	KC
OLSON, SHARON L. B.S., Northern Michigan University; M.A., Western Michigan University	Biological Science	NC
ORTH, JAMES R. Vocational Certificate, State of Florida	Welding	DC
OWEN, HAROLD JAMES, JR. B.A., M.A., State University of New York at Albany; Ph.D., University of Georgia	Vice President for Campus Operations	DA
PAASCHE, HELEN D. Diploma, St. Luke's Hospital School of Nursing, Jacksonville, Florida	Surgical Technician	NC
PADGETT, WAYNE R. B.S., M.A., Austin Peay State University; Ed.S., University of Florida	Social Science	KC
PARK, ALLEN G. B.S., University of Georgia; M.A., University of Alabama at Tuscaloosa	Mathematics	KC
PARSONS, PERCY L. B.S., M.Ed., Florida A & M University	Counselor	DX
PATTERSON, ELISE B.S., Massachusetts State College at Salem; M.A., Clark University, Worchester, Massachusetts	Business	KC
PATTERSON, GERALD R. B.S., M.A., University of Kentucky	Counselor	NC
PATTON, JON W. B.A., Jacksonville University; M.A., University of Tennessee at Knoxville	Humanities	NC

PEREZ, RICARDO	Spanish	SC
D.J., University of Havana, Cuba; M.A., Ph.D., University of Florida		
PERRY, ROBERT A.	Gasoline Engine Repair	DC
Vocational Certificate, State of Florida		
PETERSEN, PHILLIP L.	Biological Sciences	SC
B.S., University of Florida; M.A., Northeast Missouri State University		
PETERSON, JOHN W.	Director, Learning Resources	SC
B.A., Florida Atlantic University; M.A., Appalachian State University		
PILBEAM, SUSAN P.	Respiratory Therapy	NC
B.A., Hiram College; B.S., Ohio State University; M.S., Miami University, Oxford, Ohio		
PINE, SUE C.	Humanities	SC
B.A., North Texas State University; M.A., University of Utah		
PLYMALE, JOHN R.	Biological Sciences	SC
B.A., Marshall University; M.S., University of Alabama		
POLLARO, ROBERT M.	Humanities	SC
B.A., M.A.T., Jacksonville University		
POOLEY, ROBERT N.	Physical Science	KC
B.A., M.S., University of Wisconsin		
POWERS, STEPHEN E. IV	Mathematics	SC
B.A., Rollins College; B.A., Southern Missionary College; M.A.T., Andrews University, Berrien Springs, Michigan		
POYTHRESS, TRAVIS R.	Metal Work/Steel Fabrication	DC
Vocational Certificate, State of Florida		
PREUSS, DOROTHY M.	Director, Student Activities	SC
B.A., University of Northern Colorado; M.Ed., Oregon State University		
PRICE, STEWART W.	Construction Electricity	DC
A.A., Florida Junior College at Jacksonville; B.A., University of North Florida		
PRIEST, MARY D.	Cosmetology	KC
Diploma in Accounting, Massey Business College, Jacksonville, Florida; Vocational Certificate, State of Florida		
PROBST, RICHARD F.	Economics	KC
B.A., M.S., Florida State University		
RAINEY, ROBERT R., JR.	Psychology	SC
B.A., Carson-Newman College; M.A., East Tennessee State University		
RAULERSON, MARIAN P.	Mathematics	SC
B.A., Clarke College, Dubuque, Iowa; M.A., Loyola University; Ed.D., Nova University		
RAY, RUTH G.	Counselor	KC
B.S., Tuskegee Institute; M.A., Hampton Institute		
REED, ELIZABETH C.	Communications	SC
B.A., State College of Arkansas; M.A., University of Arkansas		

REED, CHARLES E., JR. B.A., State College of Arkansas; M.A., University of Florida	Communications	SC
REESE, RUTH C. A.B., Hunter College of the City University of New York; M.Ed., University of Florida	Home Economics	KC
REHKOPF, WENDELL P. B.S., Michigan State University; M.Ed., University of Florida	Business	DC
RESPESS, RICHARD D. B.I.E., Georgia Institute of Technology; M.S., Florida State University	Dean, Career Education	NC
REYNOLDS, FRED C. A.A., St. Johns River Junior College; B.A., M.Ed., University of Florida	Communications	SC
RICE, RAY C. B.S., Lander College	Home Economics	KC
RICHARDSON, SARAMAE S. B.S., Florida A & M University; M.A., Teachers College, Columbia University	Mathematics	NC
ROBBINS, GAY S. B.A., Centre College of Kentucky; M.A.T., Rollins College	Communications	KC
ROBERTSON, DONALD P. B.A., Rensselaer Polytechnic Institute; M.B.A., University of North Florida	Director, Systems Design	DA
ROBERTSON, RICHARD D. B.S., Syracuse University; M.B.A., The George Washington University	Data Processing	NC
ROBISON, PATRICK L. B.A., M.A., Western Kentucky University	Counselor	NC
ROEY, HOWARD C. B.S., Jacksonville University; M.A., Appalachian State University	Physical Education	NC
ROGERS, ROY V. Vocational Certificate, State of Florida	Sheet Metal	DC
ROOD, HOLLAND W. B.S., Clarkson College of Technology; M.S., State University of New York at Albany	Engineering	SC
RORER, SALLY M. B.A., Lynchburg College; M.S., University of Tennessee at Knoxville	Physical Education	NC
ROSENBERRY, BASIL D. B.S., M.Ed., St. Bonaventure University	Mathematics	SC
ROSSIE, A. NEWMAN B.A., M.A., Mississippi State University	Social Science	SC
ROURKE, ANNE B. B.A., Jacksonville University; M.A., University of Florida	Adult Basic Education	DC
RUPP, KEITH C. Vocational Certificate, State of Florida	Welding	NC

RUSSELL, CARETA R. B.S., Savannah State College; M.Ed., Florida A & M University	Communications	SC
RUSSOS, MILTON A. A.A., Indian River Community College; B.A., M.Ed., University of Florida	Director, Student Activities	KC
RUTLEDGE, AUSTIN M., JR. B.A., Stetson University	Director, Business Affairs (North Campus)	DA
SAADEH, MARY A. B.S., East Carolina University; M.S., University of Tennessee at Knoxville	Home Economics	KC
SAARE, E. JOHN B.S., Bradley University; M.A., University of Florida	Special Project Coordinator	KC
SAFFY, EDNA B.A., M.Ed., University of Florida	Communications	SC
SANFORD, ROBERT M. B.A., M.A., University of Florida	Dean, Academics	KC
SASSER, JOSEPH H. B.A., Jacksonville University; M.A., University of Florida	Social Science Florida State	KC
SCHAEFER, MARTHA G. B.A., M.A., Ed.D., University of Florida	Communications	NC
SCHENKEL, GILBERT J. B.S.F., University of Florida; M.S., University of Florida	Director, Evening Programs Florida State	NC
SCHICK, FRANK J. B.S., Auburn University; M.A., University of Alabama	Counselor	KC
SCHOMBERG, ORVILLE C. B.S., Colorado State University; M.S., University of Colorado; M.A., Colorado State College	Psychology Oklahoma State	KC
SCHROEER, HOWARD J. B.S., Mankato State College; M.Ed., University of Florida; Ph.D., University of Alabama at Tuscaloosa	Director, Plant Management	DA
SCHUPP, JAMES F. B.F.A., Nebraska State Teachers College; M.A., University of Denver	Division Chairman, Fine Arts and Humanities	SC
SCOTT, WILLIAM, JR. B.S., Florida A & M University; M.A., Columbia University; Ed.D., Nova University	Dean, Adult-Continuing Education	SC
SEALES, JOHNIE H. Vocational Certificate, State of Florida	Building Maintenance Mechanics	DC
SEITNER, ALFRED J. A.B., Dartmouth College; M.C.S., Amos Tuck School of Business Administration, Dartmouth College	Distributive and Mid- Management Education	KC

SESSIONS, BETTYE J. B.A., Florida A & M University; M.A.T., Jacksonville University	Humanities	KC
SHANKLIN, MARY E. B.S., University of Florida; M.S., Florida State University	Business Related	DC
SHANNAHAN, MARY K. B.S., D'Youville College; M.A., University of Florida	Nursing	NC
SHANNON, MARY L. B.A., University of Florida; M.Ed., College of William & Mary in Virginia	High School Credit (English)	DC
SHEA, LOUISE C. A.B., B.S., College of St. Rose, Albany, New York; M.A., Teachers College, Columbia University	Nursing	NC
SHEPPARD, LUSK W. B.S., M.S., Florida State University	Criminal Justice	SC
SHERIDAN, CHARLES L. A.B., Elon College; M.A., University of North Carolina at Chapel Hill	Biological Science	KC
SHERIDAN, RUBY M. B.S., M.Ed., University of North Carolina at Greensboro	Home Economics	KC
SIMMONS, BRENDA B.A., Bethune-Cookman College; M.A., Atlantic University	Communications	NC
SIMMONS, MARY F. B.S., Jacksonville University; M.S., Florida State University	Librarian	DC
SIMONI, PATRICIA F. C.D.A., American Dental Assistant Association	Dental Assisting	NC
SINGH, RAM G. B.A., M.A., Government College, India; M.S., Punjab University; Ph.D., University of Florida	Physics	NC
SINGLETARY, EVA K. Diploma, The Watts Hospital School of Nursing, Durham, North Carolina	Nursing	NC
SINGLETARY, RICHARD J. B.A., Jacksonville University; M.A., Southern Illinois University	Humanities	KC
SMITH, ANN C. B.S., Mary Washington College; M.S., Yale University School of Nursing	Nursing	NC
SMITH, KENNETH M. B.S., Angelo State University, San Angelo, Texas; M.S., Montana State University	Biological Science	NC
SMITH, MARIE D. B.A., Jacksonville University; M.A., University of Florida	French	SC
SMITH, CLAUDE J., JR. A.B., Birmingham Southern College; M.A., University of Alabama at Tuscaloosa	Communications	SC
SNEED, ANNIE B. Diploma, Brewster Methodist Hospital School of Nursing, Jacksonville, Florida	Nursing	NC

PEARS, JACKSON L. B.S., Bowling Green College of Commerce; M.B.A., University of North Florida	Director, Business Affairs (South Campus)	DA
TANDBERRY, JOHN L., JR. Vocational Certificate, State of Florida	Brick and Blocklaying	DC
TANLEY, JOHN G., JR. B.A., M.A.T., Jacksonville University	Director, Evening Programs	SC
TEGALL, CARROLL R. B.S., Maryville College, Tennessee; M.Div., Columbia Theological Seminary; M.A., Florida State University	Humanities	KC
TEIN, STANLEY W. A.B., University of Florida; M.A., New York University	Psychology	SC
TEWART, JANE H. B.A., M.Ed., Memphis State University	Counselor	SC
TEWART, SARA L. B.A., Florida A & M University; M.A., New York University	Communications	NC
TONER, JESSIE E. B.S., Florida State University; M.A., Memphis State University	Physical Education	SC
TSTORES, PATRICIA B.S., Jacksonville University	Nursing	NC
TSTOUT, CANDACE A. B.S., University of South Florida	Medical Laboratory Technology	NC
TSTUCKMAN, JEFFREY A. B.S., M.A., Ohio State University; Ed.D., University of Florida	Director, Institutional Research	DA
TSTUDEBAKER, GENE H. B.S., Roanoke College	Criminal Justice	SC
TSUMMERS, COLLIER S. B.A., University of South Florida; M.A., Appalachian State University	Counselor	SC
TSUMNER, JOHNNY G. B.S., M.A., University of Southern Mississippi	Engineering	NC
TAYLOR, DONNA H. B.S., Radford College; M.S., Virginia Polytechnic Institute and State University	High School Credit (Home Economics)	DC
TAYLOR, JON T. B.S., Virginia Polytechnic Institute and State University; M.A., Appalachian State University; Ph.D., Florida State University	Communications	NC
TTERRELL, C. ROLAND B.S., Troy State University; M.A., Ed.D., University of Alabama at Tuscaloosa	Director, Educational Program Development	DA
THOMAS, BILLY E. Vocational Certificate, State of Florida	Carpentry	DC

THOMAS, FRANCES P.	Assistant to the Vice President for Administrative and Business Services	[
THOMPSON, DONALD E. B.A., Wayland Baptist College; M.M., Florida State University	Music	§
THOMPSON, KENNETH W. A.B., Dartmouth College; M.B.S., University of Colorado	Mathematics	N
THOMSON, ALEXANDER Vocational Certificate, State of Florida	Welding	[
TIDWELL, RUTHINE B.A., Benedict College; M.S., Florida State University	Social Science	§
TOLLI, ELLINOR B.A., University of Texas at Austin; M.S., Florida State University; J.D., University of Miami	Social Science	§
TOUCHTON, REGINALD F. B.A., M.Ed., University of Florida; Ed.D., Nova University	Division Chairman, Communications, Social Science, and Developmental Education	N
TRAPP, JACQUELYN D. B.S., University of Georgia; M.S., Florida State University	Medical Laboratory Technology	N
TRAUTMANN, PAUL C. B.A., M.A., University of Alabama at Tuscaloosa	Director, Business Education and TV Instruction	[
ULLOA, DERBY L. B.A., M.A., Florida State University	Art	§
VESSELS, SHIRLEY T. B.A., Georgia State University; M.B.A., University of Houston	Business	N
VOCKELL, FRANK W., JR. B.A., Miami University, Miami, Ohio; M.S., University of Cincinnati	Biological Science	†
VonDOLTEREN, JOSEPH A. Vocational Certificate, State of Florida	Automotive Body Repair	[
WALLACE, JOSEPH R. B.S., East Carolina University; M.A., Appalachian State University	Director, Testing	†
WARREN, THOMAS A. B.S., M.S., Florida State University	Business	†
WATKINS, LLOYD G. B.S., Jacksonville University; M.Ed., University of Florida	Director, Community Services	N
WATSON, ROBERT L. B.S., Georgia Institute of Technology; M.B.A., Stanford University	Vice President for Administrative and Business Services	[
WATTRON, THEODORE N. A.B., Anderson College, Indiana; M.A., Ohio State University	Social Science	N

'EAVER, BILLY R.	Division Chairman, Social Science	SC
B.A., M.T., Northeastern State College, Tahlequah, Oklahoma		
'EBB, MARY ALICE	Director, Program Development	KC
B.S., Jacksonville University; M.S.L.S., A.M., Florida State University		
'ELMAN, GEORGE A.	Engineering	NC
B.A.E.E., Louisiana State University and Agricultural and Mechanical College		
'EST, FELICIA E.	Division Chairman, Natural Science, Mathematics and Physical Education	SC
B.S., Stetson University; M.Ed., Ed.D., University of Florida		
'ETHERELL, RONALD G.	Art	SC
A.B., M.A., Western Kentucky University		
'HITE, SYLVIA F.	Humanities	KC
B.M.E., Jacksonville University; M.S., Florida State University		
'HITEHEAD, KENNETH	Communications	NC
B.S., M.A., East Tennessee State University		
'IESENFELD, LAURA A.	Director, Medical Laboratory Technology	NC
B.S., University of Kentucky; M.Ed., University of Florida; Ed.D., Nova University		
'ILLIAMS, BARBARA J.	Assistant Director, Records	DA
B.S., Howard University		
'ILLIAMS, BILLY F.	Radio & Television Repair	NC
B.S., University of Florida		
'ILLIAMSON, WALTER E.	Social Science	SC
B.A., Millsaps College; M.Div., Emory University; M.A., University of South Florida		
'ILSON, JACK L.	Social Science	KC
A.B., University of Chattanooga; M.S., Florida State University		
'ILSON, LEROY B.	Communications	SC
A.B., University of Pennsylvania; M.A., The George Washington University		
'ILSON, RICHARD L., II	Counselor	DC
B.S., Florida Memorial College; M.Ed., Florida A & M University		
'ISE, STEPHEN R.	Director, Resource Development	DA
B.S., Florida Southern College; M.Ed., Middle Tennessee State University; Ed.D., University of Alabama at Tuscaloosa		
'ISNER, JERRY J.	Psychology	NC
B.S., M.A., Tennessee Technological University; M.A., University of Tennessee		
'OLFORD, LARRY D.	Counselor	SC
B.A., M.A., Appalachian State University		

WOLFSON, ALBERT I. B.S., Jacksonville University; C.P.A., State of Florida	Business	N
WOLSON, WILLIAM J. B.A., M.A., Florida State University	Social Science	K
WOMBLE, HAZEL J. B.S., M.S., Florida State University; M.S., University of North Florida	Nursing	N
WOOLARD, LUCIEN W. Vocational Certificate, State of Florida	Welding	D
WORDEN, DWIGHT G. A.B., M.A., Ph.D., The George Washington University	Psychology	S
WRIGHT, JUDITH B. Diploma, Piedmont Hospital School of Nursing, Atlanta, Georgia	Nursing	N
WRIGHT, KAREN A. B.S.A., M.Ed., University of Florida	Music	S
WRIGHT, PETER B., JR. B.S., Newberry College; M.A., George Peabody College for Teachers	Dean, Adult-Continuing Education	N
WYGAL, BENJAMIN R. B.A., Texas Tech University; M.A., Ph.D., University of Texas at Austin	President	D
WYLLY, SUSAN A.A., Marjorie Webster Junior College; B.S., University of Georgia; M.S.T., Georgia Southern College	Art	S
YOUREE, JOHN T. B.S.E., Henderson State College, Arkansas; M.S., University of Arkansas	Biological Science	N

CAMPUS DESIGNATION

DC — DOWNTOWN CAMPUS

KC — FRED H. KENT CENTER

NC — NORTH CAMPUS

SC — SOUTH CAMPUS

DA — DISTRICT ADMINISTRATION

CAREER AND ADULT EDUCATION ADVISORY COMMITTEES

One of the important tasks of the College is to provide relevant career education programs to meet the occupational needs of individuals and the trained manpower needs of business and industry. Experience has shown that this can best be accomplished with the help of locally oriented Advisory Committees. They provide the College with advice and assistance in developing career education programs that are attuned to the times and designed to serve the needs of the area.

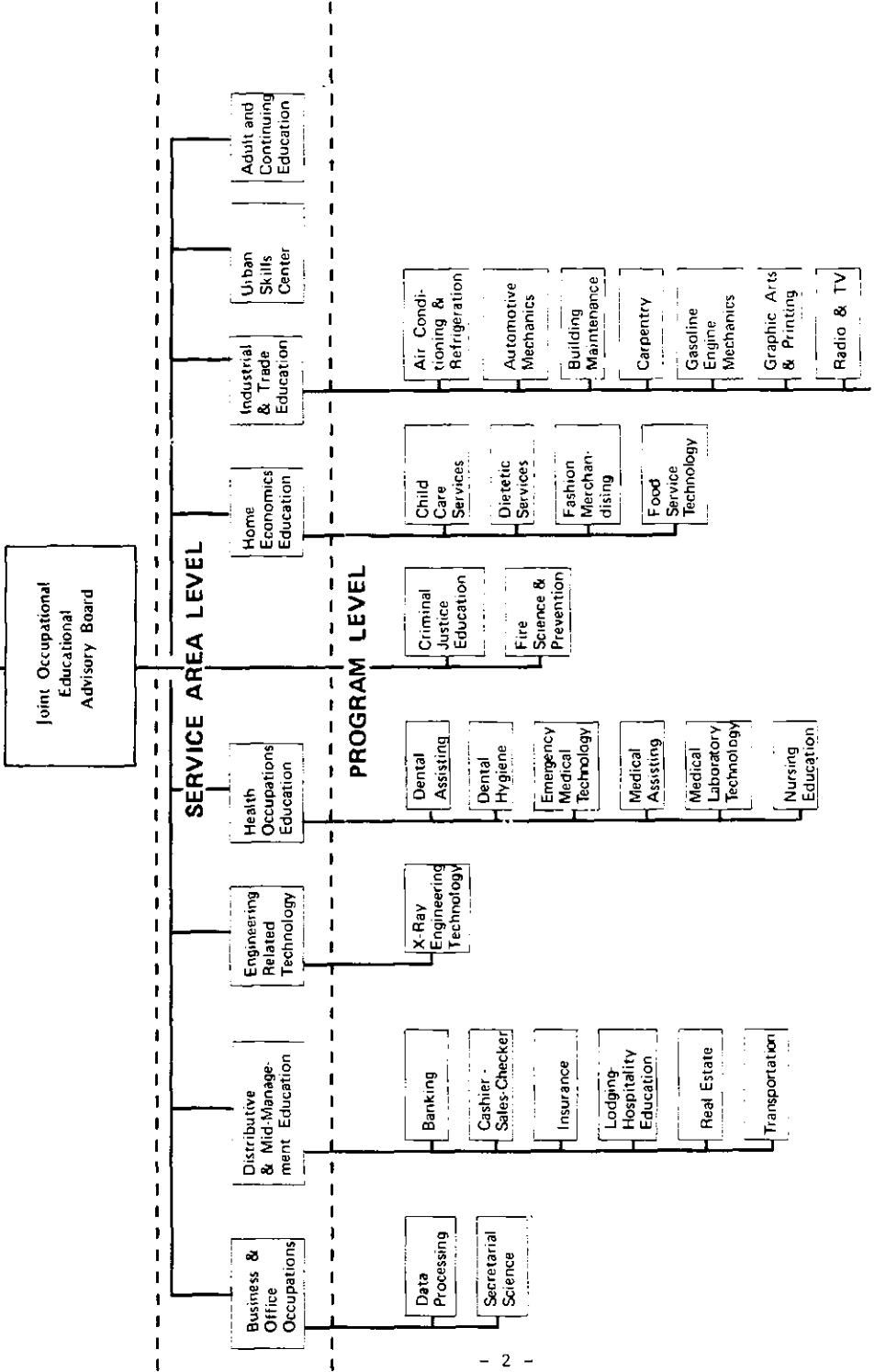
The Advisory Committee structure at Florida Junior College at Jacksonville consists of groups of persons from the community appointed to advise the college faculty regarding career (vocational-technical-occupational) and adult education programs. Advisory Committee members serve voluntarily without pay. The committees are advisory and do not possess formal authority.

The Advisory Committee structure consists of three levels. At the top level, the Joint Occupational Advisory Board consists of a select group of citizens representing a broad range of interests in the community. The function of this Board is to advise the President, Vice-President for Campus Operations, and District Dean of Career and Adult-Continuing Education on the overall career and adult education programs. At the second level, service area Advisory Committees consist of citizens representing various interests and skills within the service area. At the third level, program Advisory Committees are organized when and as required. Chairpersons of program Advisory Committees also serve as members of the appropriate service area Advisory Committee. Following this introduction is a chart which shows the advisory committee structure for the College.

Florida Junior College at Jacksonville is very grateful for the valuable and indispensable assistance provided by our Advisory Committees in the development of career (vocational-technical-occupational) and adult education programs. Without their assistance, the rapid growth and expansion of our career and adult education programs would not have been possible.

ADVISORY COMMITTEE STRUCTURE

ADVISORY BOARD LEVEL



JOINT OCCUPATIONAL EDUCATION ADVISORY BOARD

Mr. William B. Mills
Chairperson
Culverhouse, Tomlinson, Mills
DeCarion and Anderson,
Attorneys

Mr. Edward G. Ballance
Plant Manager
Maxwell House Division of
General Foods Corporation

Mr. Harold J. Belcher
Chief Forester
Southeast Timber Division
ITT Rayonier, Incorporated

Mr. John W. Bowden
President
Northeast Florida Building
Trades Council

Mr. J. Shepard Bryan, Jr.
Vice-President and
General Counsel
Winn-Dixie Stores, Incorporated

Mr. John D. Buchanan, Jr.
Senior Vice-President
Prudential Insurance Company
of America

Mr. Clanzel T. Brown
Executive Director
Jacksonville Urban League

Mr. I. H. Burney, II
President
Afro-American Life Insurance
Company

Ms. Irby Exley
(Virginia)
Homemaker

Ms. Sam N. Farris
(Bonnie)
Voyage Accountant
Strachan Shipping Company

Mr. Robert R. Feagin
President
Florida Publishing Company

Mr. Harold Gibson
Manager, Training and
Manpower Resources
Offshore Power Systems

Mr. Wilbur H. Glass
President
Auchter Company

Ms. Helen P. Keefe
Executive Director
Florida State Board
of Nursing

Mr. John H. McCormack, Jr.
Chairman of the Board
Atlantic National Bank
West Bay Annex

Mr. Walter A. McRae
President
Duval Motors

Mr. Eldridge Partin
Owner
Partin Shoe Company

Mr. Frank Peterson
President
Diversified Products Manufacturing
Company

JOINT OCCUPATIONAL EDUCATION
ADVISORY BOARD (CONTINUED)

Mr. G. H. W. Schmidt
President
Television 12 of Jacksonville

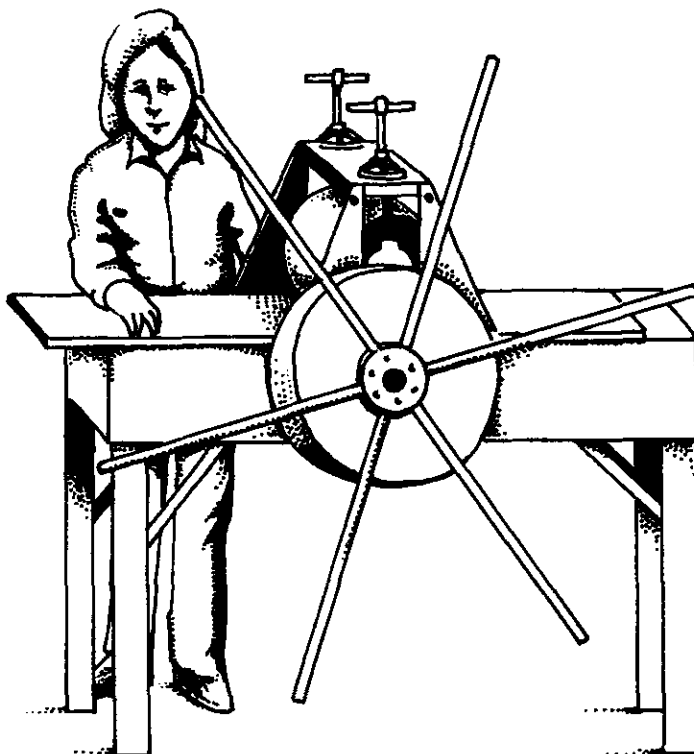
Ms. Lyle J. Vernier
(Carolyn)
Director
Environmental Health

Mr. James J. Sugrue
Vice-President in Charge
of Operations
Jacksonville Shipyards,
Incorporated

Mr. John White
Vice-President,
North Florida
Southern Bell Telephone and
Telegraph Company

Dr. Samuel J. Tucker
President
Edward Waters College

Mr. R. P. T. Young
Vice-President and
General Manager
Glidden-Durkee Division
SCM Corporation



SERVICE AREA LEVEL

BUSINESS AND OFFICE OCCUPATIONS

Mr. E. L. "Bud" Fisher
Chairperson
President
Century 21 Executive Center

Mr. John W. Demps
Director, Urban Affairs
Jacksonville Area Chamber of
Commerce

Ms Madeline Berry
Personnel Manager
Peninsular Life Insurance Company

Mr. Paul Halter
Vice-President
Stockton, Whatley, Davin
& Company

Mr. C. Lee Daniel, Jr.
President
Controlled Environments for
Industry, Incorporated

Ms. Marjorie E. Kirk
Manager, Personnel Service
Ryder Truck Lines, Incorporated

PROGRAM LEVEL

DATA PROCESSING

Mr. James M. Neustadter
Chairperson
Vice-President
Atlantic National Bank

Ms. Mary Groves
Systems Engineer
IBM Corporation

Dr. Yap-Siong Chua
Assistant Professor,
Mathematical Sciences
University of North Florida

Mr. Tom Koubek
Senior Computer Systems
Analyst
Prudential Insurance Company
of America

Mr. Jack Cohoon
Computer Specialist,
Data Processing
U.S. Naval Air Station

Mr. James H. McRae
EDP Training Specialist
Blue Cross and Blue Shield of
Florida, Incorporated

Mr. Walter Cummulla
Vice-President, Computer
Resources
Computer Power, Incorporated

Mr. Frank A. Reneke
Division Chief
Department of Central Services
City of Jacksonville

Mr. Maurice C. Grant
Computer Operator
May Cohens

Dr. Robert B. Stanley
Director, Data Processing
Duval County School Board

Mr. Robert Wilkerson
Assistant Data Center
Director II
Division of Health and Rehabili-
tative Services
State of Florida

PROGRAM LEVEL

SECRETARIAL SCIENCE

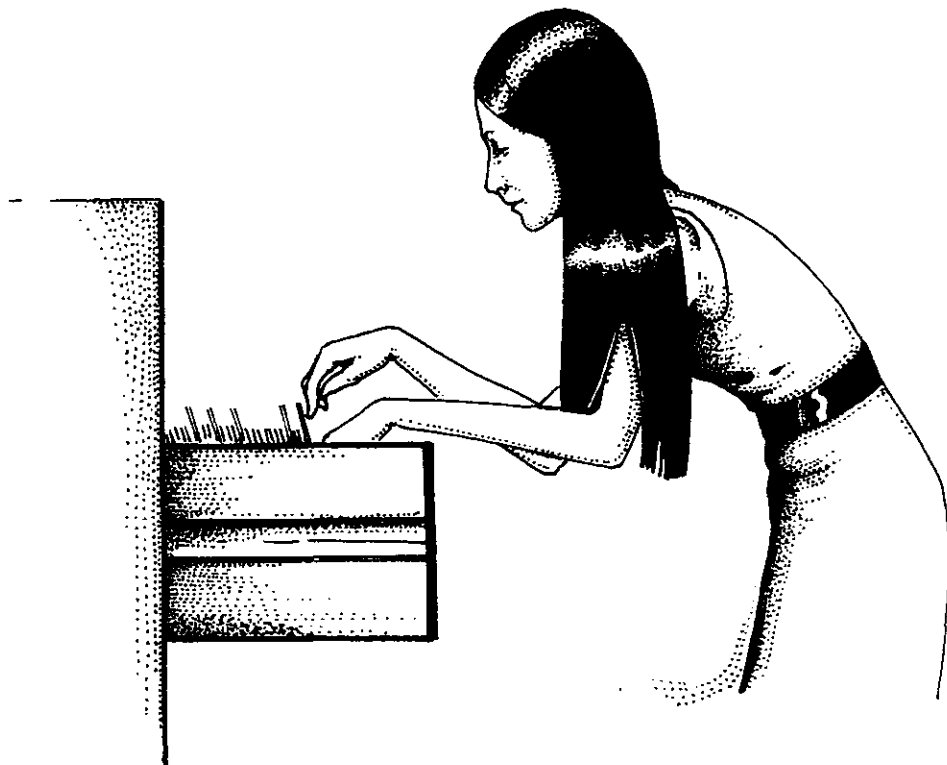
Ms Christine Bell
Chairperson
Office Manager
Barsco, Incorporated

Ms. Annie Lou Crump
Legal Secretary
Johnson and Marshall, Attorneys

Ms. Geraldine Howard
Office Manager
Manpower, Incorporated

Mr. Tom Bolden
Personnel Staff Assistant
Maxwell House
Division of General Foods
Corporation

Ms. Penny S. Murray
Administrative and Technical
Trainee - Service Fire Company
State Farm Insurance Companies



SERVICE AREA LEVEL

DISTRIBUTIVE AND MID-MANAGEMENT EDUCATION

Ms. Bette S. Mallison
Chairperson
Member, Jacksonville
Area Zoning Board

Ms. C. T. McIntire
Vice-President
Professional Insurance
Corporation

Mr. David R. Arpin
Executive Vice-President
Florida Hotel and Motel
Association, Incorporated

Mr. H. A. Penny
Sales Promotion Manager
Sears, Roebuck and Company

Mr. Raymond A. David, CLU
Agent
Massachusetts Mutual Life
Insurance Company

Mr. Kenneth L. Pray, Jr.
Trust Officer
Atlantic National Bank

Mr. Lee Edwards
Assistant Vice-President
First Federal Savings and Loan
Association of Jacksonville

Ms. Carolyn B. Rogers
Secretary to Chairman of the
Board
Seaboard Coast Line Railroad
Company

Mr. David A. Howard
Publisher
Howard Publications, Incorporated

Mr. Donald J. Schneider
Vice-President and General Manager
Ponte Vedra Inn

Mr. John P. Ingle, Jr.
Consultant
Eastern Airlines

Mr. John C. Staninger
First Vice-President
Stockton, Whatley, Davin and
Company

Mr. E. Mack Johnson, CLU
President, Jacksonville
Chapter, Chartered Life
Underwriters
Prudential Insurance Company of
America

Mr. John Wallace
Executive Vice-President
Duval County Teachers
Credit Union

Dr. Richard de R. Kip
Chairman, Department of
Finance, Insurance and
Land Economics
University of North Florida

Mr. Alton Yates
Administrative Assistant
Mayor's Office
City of Jacksonville

PROGRAM LEVEL

BANKING

- Mr. Nelson F. Fielding, Jr.
Chairperson
Assistant Vice-President
Florida First National Bank
of Jacksonville
- Mr. Robert L. Berl
Senior Vice-President
Trust Division
Jacksonville National Bank
- Mr. Michael F. Capps
Assistant Cashier and
Marketing Officer
Atlantic Bank of South Jacksonville
- Mr. Ulysses B. Carter
Service Supervisor
Federal Reserve Bank
- Mr. Cecil Gibson
Vice-President and Cashier
American National Bank
of Jacksonville
- Mr. Robert O. Grimes
FJC Student - Banking Major
Barnett Bank of Jacksonville, NA
- Dr. Richard de R. Kip
Chairman, Department of Finance,
Insurance and Land Economics
University of North Florida
- Ms. Joan Little
Assistant Cashier and
Personnel Manager
Florida National Bank at Lake Shore
- Mr. John A. McCrary, Jr.
Financial Analyst
Flagship Banks, Incorporated
- Mr. Lou Myers
Board of Directors
Century National Bank
- Ms. Marilyn J. Nash
Assistant Cashier
Barnett Bank of Murray Hill
- Mr. Kenneth L. Pray, Jr.
Trust Officer
Atlantic National Bank
- Mr. Wilbur H. Shorts
Senior Vice-President
and Cashier
Flagship State Bank of
Jacksonville
- Mr. Robert J. Slack
Administrative Assistant
Federal Reserve Bank
- Mr. William M. White
President
Barnett Bank of Murray Hill

PROGRAM LEVEL

CASHIER/SALES/CHECKER

Mr. Eddie Jackson
Chairperson
Executive Vice-President
Lil' Champ Food Stores

Mr. Jesse Benton
Manager
Publix Supermarkets, Incorporated

Mr. Reginal Bradley
Assistant Personnel Director
A & P Food Stores

Mr. F. Osborn Bryant, Jr.
President
Frank Bryant Company, Incorporated

Mr. Leroy Kelly
Supervising Counselor
Division, Vocational Rehabilitation
Unit 4, State of Florida

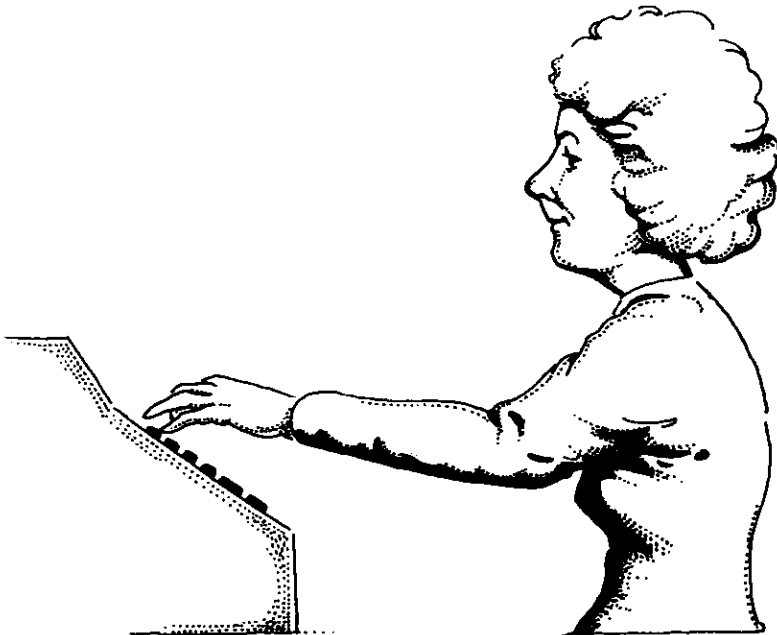
Mr. James M. Lawhum
Area Supervisor
Publix Supermarkets, Incorporated

Mr. William E. Litton
Division Employee Relations
Manager
Colonial Stores, Incorporated

Mr. Roy E. Manning
Administrative Assistant
Food Fair Stores, Incorporated

Mr. Milo Richardson
State Project Director
Jacksonville Restaurant
Association

Mr. David E. White
President
Hobart Sales and Service Agency



PROGRAM LEVEL

INSURANCE

Mr. E. Mack Johnson, CLU
Chairperson
President, Jacksonville
Chapter, Chartered Life
Underwriters
Prudential Insurance Company of
America

Mr. Richard P. Austin, CLU
Manager
The Travelers Insurance Companies

Mr. Raymond A. David, CLU
Agent
Massachusetts Mutual Life
Insurance Company

Mr. Robert Gut, CPCU
Field Representative
State Treasurer and Insurance
Commissioner's Office

Mr. Thomas Heslin
Manager
Underwriters Adjusting Company

Ms. Freda Johnson, CLU
Special Agent
Prudential Insurance Company of
America

Mr. Charles W. Jones, CLU
Assistant Professor of
Insurance
University of North Florida

Ms. C. T. McIntire
Vice-President
Professional Insurance
Corporation

Ms. LeAnne Osburne, CLU
Production Supervisor
The Travelers Insurance
Companies

Mr. Gordon M. Rainey, CLU
General Agent
New England Mutual Life
Insurance Company

Mr. Rex R. Rhea
President
Insurance Advisors, Incorporated

Mr. O. V. Robichaud, CLU
Trust Development Officer
Barnett Bank of Jacksonville, NA

Mr. James F. Squires, CLU
Director, Marketing
Development
Peninsular Life Insurance
Company

Mr. Frank H. Tally
General Agent
State Farm Insurance Companies

Ms. Charlie Mae Walton
Property Casualty Manager
C. E. Broyles Insurance

Ms. Marion Young, CLU
Assistant Vice-President and
Regional Director
Atlanta Life Insurance Company

PROGRAM LEVEL

LOGGING/HOSPITALITY EDUCATION

Mr. Jack Colbert
Chairperson
Manager
Royal Inn, of Jacksonville

Mr. David R. Arpin
Executive Vice-President
Florida Hotel and Motel
Association, Incorporated

Ms. Yvonne Corey
Director, Sales and Public Relations
Thunderbird Motor Hotel

Mr. Ron Devore
Manager
Howard Johnson's West Motor Lodge

Mr. Ron Gabel
General Manager
Quality Inn North

Mr. Michael Glover
Banquet Manager
Hilton Hotel

Ms. Jean Hayes
Manager
Convention Bureau
Jacksonville Beaches Area
Chamber of Commerce

Mr. John Higgins
General Manager
Hertz Skycenter Inn

Mr. Richard Jones, Sr.
General Manager
Ramada Inn West

Mr. Spencer Ladd
Executive Vice-President
Convention and Visitors Bureau

Mr. J. Maxwell Myers
Director of Sales
Hilton Hotel

Mr. Donald J. Schneider
Vice-President and
General Manager
Ponte Vedra Inn

Mr. Hugh Snow
General Manager
Robert Meyer Hotel

Mr. R. C. Troutman
Inkeeper
Holiday Inn South

PROGRAM LEVEL

REAL ESTATE

Mr. John C. Staninger
Chairperson
First Vice-President
Stockton, Whatley, Davin and
Company

Mr. L. I. Alexander
Director, Equal Opportunity Division
U.S. Housing and Urban Development

Ms. Audrey Barnes
Realtor

Dr. Ronald O. Boatright
Assistant Professor of Land
Economics
University of North Florida

Mr. Walter T. Bowen
President
Bowen Real Estate

Ms. Louise Cantrell
Broker Salesman
Buckman, Ulmer and Mitchell,
Incorporated

Ms. Bettie Caribaltes
Vice-President
Caribaltes Realty, Incorporated

Mr. Raymond P. Harris
President
Harris Real Estate and
Associates, Incorporated

Mr. John H. Rogers
President
Rogers, Miller, Taylor and
Company

Mr. James A. Shannon
Vice-President and Sales
Manager
Fred H. Paulk, Incorporated

Mr. Walter D. Smith
Vice-President
Tucker Brothers, Incorporated

Ms. J. Glover Taylor
President
J. Glover Taylor, Incorporated

Mr. Bob D. Workman
President
Workman Realty, Incorporated

PROGRAM LEVEL

TRANSPORTATION

Mr. Dave Hodges
Chairperson
Traffic Manager
Hudson Pulp and Paper Company

Mr. John J. Dooley
Traffic Manager
Gator Freightways, Incorporated

Mr. Joseph Fuson
Assistant Manager, Pricing
Freight Traffic Department
Seaboard Coast Line Railroad
Company

Mr. Donald Graham
Instructor of Transportation &
Logistics
University of North Florida

Mr. Harry P. Hart
President
Harry P. Hart Associates
Public Relations Counselors

Mr. John P. Ingle, Jr.
Consultant
Eastern Airlines

Mr. Robert L. Liggett
Assistant Traffic Manager
Ploof Truck Lines, Incorporated

Mr. Bruce Macrae
Traffic Manager
Food Fair Stores, Incorporated

Mr. Guy Marvin
Vice-President
New Deal Cab Company

Mr. Robert J. Murphy, Jr.
Port Manager
Puerto Rico Maritime Shipping
Authority

Mr. Lamar Nash
Director, Governmental Affairs
Jacksonville Area Chamber
of Commerce

Mr. Martin Noon
Director of Safety
Ryder Truck Lines, Incorporated

Ms. Carolyn B. Rogers
Secretary to Chairman
of the Board
Seaboard Coast Line Railroad
Company

Mr. Edwin A. Shaw
Traffic Manager
Jacksonville Port Authority

Mr. Edward A. Tanner
Director of Transportation
U.S. Naval Air Station

Mr. James R. Turney
Assistant Manager of Audit
and Research
Ryder Truck Lines, Incorporated

Mr. Allan Williams
Supervisor, Dispatchers
Suddath Van Lines, Incorporated

SERVICE AREA LEVEL

ENGINEERING RELATED TECHNOLOGY

Mr. George Marsch
Chairperson
Assistant Chief, Engineering
U.S. Army Corps of Engineers

Mr. Harold Gibson
Manager, Training and
Manpower Resources
Offshore Power Systems

Mr. Robert F. Darby, AIA
Executive Vice-President
Reynolds, Smith and Hills
Architects, Engineers and
Planners, Incorporated

Mr. James O. Sewell
Plant Engineer
Glidden-Durkee
Division of SCM Corporation

Mr. H. R. Emery
Environmental Engineering
Manager
St. Regis Paper Company

Mr. G. Edward Shafer
Partner
Akel, Logan and Shafer

PROGRAM LEVEL

X-RAY ENGINEERING TECHNOLOGY

Mr. Gene B. Torrance
Chairperson
Technical Sales
Representative
Radiography Markets
Eastman Kodak Company

Mr. Don Leary
Field Representative,
Medical Department
E. I. duPont deNemours and
Company

Mr. Jack T. Barnes
Manager
S & H X-Ray Company

Mr. Arthur Miller
Salesman
Litton Medical Systems
Division of Litton Industries

Mr. Charles Duran
Service Representative
Picker X-Ray Corporation

Mr. Gary Patterson
Salesman in Charge,
Medical Systems Division
General Electric Company

Mr. Cecil Ffoulks
Consultant

Mr. R. C. Scudder
Senior Service Systems
Representative,
Medical Systems Division
General Electric Company

Mr. Anthony F. Giordano
Sales Representative
Picker X-Ray Corporation

Mr. Richard H. Weimer
Assistant District Manager
and Technical Director
Litton Medical Systems
Division of Litton Industries

Mr. Calvin Kaiser
Service Manager
S & H X-Ray Company

SERVICE AREA LEVEL

HEALTH OCCUPATIONS EDUCATION

Dr. Max Michael, Jr.
Chairperson
Assistant Dean
Jacksonville Hospitals
Educational Programs,
Incorporated
Jacksonville Division,
J. Hillis Miller Health Center
University of Florida College
of Medicine

Ms. Idele M. Hovey
Director of Nursing
St. Luke's Hospital

Mr. Fred J. Huerkamp
Executive Director
Health Planning Council of
Jacksonville, Incorporated

Mr. Robert A. Cunningham
Executive Director
St. Luke's Hospital

Ms. Hetty L. Mills
Coordinator
Outreach/Medical/Family
Health Services, Incorporated

Ms. Evelyn Earnest
Registered Medical
Technologist
Baptist Memorial Hospital

Dr. Curtis M. Phillips
General Surgeon

PROGRAM LEVEL

DENTAL ASSISTING

Dr. Joel W. Baker
Chairperson
DDS, Endodontics

Dr. H. C. Good
DDS, Orthodontics

Dr. Rupert Q. Bliss
DDS, General Practice

Dr. Robert M. Knight
DDS, General Practice

Dr. Henry G. Brietmoser
DDS, General Practice

Dr. Wallace Sears
DDS, General Practice

Ms. Grace Conway, CDA
President
Jacksonville Dental Assistants
Society

Ms. Jean Tolleson
Dental Assistant-Secretary
Office of Joel W. Baker, DDS

Dr. J. C. Downing
DDS, General Practice

Dr. Earl Williams
DDS, Oral Surgeon

PROGRAM LEVEL

DENTAL HYGIENE

Dr. Bernard Koosed
Chairperson
DDS, General Practice

Ms. Sharyl Carrillo, RDH
Hygienist
Office of
Gordon D. Perkins, DDS

Dr. A. E. Girardeau
DDS, General Practice

Dr. Joseph F. Jumber
DDS, General Practice

Ms. Swann Knowles, RDH
Hygienist
Five Points Medical Center

Ms. Libby Lauwaert, RDH
President
Jacksonville Dental Hygienists
Association

Dr. C. P. McGeachy, Jr.
DDS, General Practice

Dr. Thomas E. McRae
DDS, General Practice

Dr. Richard L. Miller
DDS, Periodontics

Dr. Harold Pattishall, Jr.
DDS, Periodontics

Dr. Gordon D. Perkins, III
DDS, General Practice

PROGRAM LEVEL

EMERGENCY MEDICAL TECHNOLOGY

Dr. Roy Baker
Chairperson
Cardiologist

Dr. William T. Haeck
Emergency Room Physician

Dr. Carman Judkins
Resident Physician
University Hospital of
Jacksonville

Dr. John Kruse
Anesthesiologist

Mr. D. D. Ponsell
Captain
Jacksonville Fire and Rescue
Department
Eight County Emergency
Medical Services

Dr. Farid Ullah
Cardiologist
Humphrey's Memorial Hospital
Fernandina Beach, Florida

PROGRAM LEVEL

MEDICAL ASSISTING

Ms. Lucille Johnson
Chairperson
Medical Assistant
Vontz, Ibach, Myrick, MD

Ms. Dorothy McDonald
Medical Assistant
Office of
Samuel J. Alford, Jr., MD

Dr. Samuel J. Alford, Jr.
Family Practice Physician

Dr. James Morris
Surgeon

Ms. Edith Bowden
Education Services
Representative
Blue Cross and Blue Shield of
Florida, Incorporated

Ms. Betty Trask, RN
Supervisor
Outpatient Clinic
University Hospital of
Jacksonville

Ms. Ann Huerkamp
Medical Assistant
President, Greater Duval
Medical Assistants
Association
Office of James Morris, MD

Ms. Annette Williams
Medical Assistant
Office of
Charles F. McKay, MD
Jacksonville Beach, Florida

PROGRAM LEVEL

MEDICAL LABORATORY TECHNOLOGY

Ms. Evelyn Earnest
Chairperson
Registered Medical Technologist
Baptist Memorial Hospital

Mr. Jack Mahoney MT (ASCP)
Chief Medical Technologist
Riverside Hospital

Mr. Benjamin Campbell
Director of Admissions
University of North Florida

Dr. Sanford A. Mullen
Executive Vice-President
and Medical Director
Jacksonville Blood Bank

Dr. Donald Frazier
Pathologist
Program Medical Director
St. Luke's Hospital

Dr. Matthew Patterson
Pathologist
St. Vincent's Medical Center

Dr. George M. Katibah
Pathologist
Baptist Memorial Hospital

Ms. Nancy Poore, MT (ASCP)
Chief Technologist
Memorial Hospital

Lt. Judith H. Littlefield
M.S.C., United States Navy
Educational Coordinator
of Laboratory Services
United States Naval
Regional Medical Center

Dr. Nathan Schneider
Chief, Bureau of Laboratories
Division of Health
State of Florida

PROGRAM LEVEL

NURSING EDUCATION

Ms. Idele M. Hovey
Chairperson
Director of Nursing
St. Luke's Hospital

Ms. Guerina Apol
Director of Nursing
University Hospital
of Jacksonville

Dr. Clyde M. Collins
Surgeon
—Alternate—
Dr. Samuel J. Alford, Jr.
Family Practice Physician

Ms. Eileen Fleese
Assistant Administrator
for Nursing
Baptist Memorial Hospital

Ms. Thelma Hall
Team Leader
Visiting Nurse Association

Ms. Kathleen Maher
Director of Nursing
Services
St. Vincent's Medical Center

Mr. H. J. McFarland, Jr.
Assistant Executive Director
University Hospital
of Jacksonville

Ms. Mary Nikodem
Director of Nursing
Memorial Hospital

Sister Catherine Norton
Administrator
St. Vincent's Medical Center

Ms. Mary Rood
Director of Nursing
Riverside Hospital

Ms. Rita Storz
Director of
Nursing Services
Methodist Hospital



PROGRAM LEVEL

CRIMINAL JUSTICE EDUCATION

Mr. Dale Carson
Chairperson
Sheriff, Duval County

Mr. John Acker
President
Fraternal Order of Police

Mr. Paul Brown
Chief
Police Department
City of Jacksonville Beach

Mr. Ben Collins
Executive Director
Greater Jacksonville Safety
Council

Mr. Hugh Wilson
Director
Community Relations Commission

Ms. Lynne Dunn
Counselor
Division of Vocational
Rehabilitation,
Unit 5 State of Florida

Mr. Z. V. Smallwood
Lieutenant
Florida Highway Patrol

Mr. Otha R. Smith, Jr.
District Supervisor
Florida Parole and Probation
Commission

Mr. Carl Stucki
Chief
Police Department
City of Atlantic Beach

PROGRAM LEVEL

FIRE SCIENCE AND PREVENTION

Mr. Woodrow W. Fish
Chairperson
Fire Marshal
Fire Department
City of Jacksonville

Mr. Walter B. Butler
Chief
Fire Department
City of Jacksonville

Mr. M. M. Hendrix
Deputy Assistant Chief
of Operations
Fire Department
City of Jacksonville

Mr. W. J. Hiers
Captain
Fire Department
City of Jacksonville

Mr. S. J. King, Jr.
Assistant Fire Chief
Fire Department
City of Jacksonville

Mr. Robert A. McCord
Owner
McCord Insurance Agency

Mr. F. E. Parrish
Deputy Assistant Chief
of Training
Fire Department
City of Jacksonville

Mr. Jerome Telfair
Lieutenant
Fire Department
City of Jacksonville

Mr. John C. Wright
Captain
Fire Department
City of Jacksonville

Mr. Russell Yarborough
Chief
Fire Department
City of Jacksonville

SERVICE AREA LEVEL

HOME ECONOMICS EDUCATION

Ms. Catherine S. Moreland
Chairperson
Homemaker

Ms. Lilian Abelardo, RD
Nutrition Consultant
Health Department
City of Jacksonville

Ms. Lee Board
Extension Home Economics
Agent
Florida Home Economics
Association, District D

Mr. Gran P. Jenkins
Personnel Director
Sears, Roebuck and Company

Ms. Nancy Lobaugh
Food Editor
Florida Times-Union
Florida Publishing Company

Ms. Jolita Mitchell
Community Organizer
Jacksonville Urban League

Mr. William J. Patti
Owner
Patti's Italian and American
Restaurant

Ms. Frances Paysinger
Supervisor, Home Economics
Education
Duval County School Board

PROGRAM LEVEL

CHILD CARE SERVICES

Ms. June Gibson
Chairperson
Homemaker

Ms. Betty Carley
Assistant Supervisor
Day Care Unit
Bureau of Children Services
Division of Family Services
State of Florida

Ms. Annie Everett
Director
College Park Kindergarten

Mr. T. W. Everett
Teacher (Retired)

Ms. Ruth Heuser
Day Care Consultant
Day Care Unit
Bureau of Children Services
Division of Family Services
State of Florida

Ms. Virginia Huxham
Kindergarten Teacher
Ponte Vedra-Palm Valley School

Child Care Services (continued)

Dr. Kathleen Johnson
Associate Professor of
Education
Jacksonville University

Ms. Harriet Ross
Director
Ortega Kindergarten

Ms. Doris McIntyre
Instructor
Lackawanna Elementary School

Ms. Marion Scarborough
Director
Happy Acres Ranch

Ms. Joyce Miles
Student Coordinator
Child Care Services
Home Economics Division
Duval County School Board

Ms. Barbara Scott
Superintendent of Early
Childhood Education
Duval County School Board

Ms. Louise Phillips
Owner
Fun Day Kindergarten and
Nursery

Ms. Janice Wood
Instructor
College of Education
University of North Florida

PROGRAM LEVEL

DIETETIC SERVICES

Ms. Joyce Windham, RD
Chairperson
Director, Dietary Services
Jacksonville

Ms. Ruth Hose, RD
Director, Food Service
Duval County School Board

Ms. Lilian Abelardo, RD
Nutrition Consultant
Health Department
City of Jacksonville

Ms. Jean Norris, RD
Consulting Dietician,
Nursing Homes and
Hospitals

Ms. Marjorie Cavan
Food Production Supervisor
University Hospital of
Jacksonville

Ms. Roseann Poole, RD
Nutrition Consultant
Division of Health
State of Florida

Ms. Mamie Davis, RD
Institutional Nutrition
Consultant
Division of Health
State of Florida

Ms. Leila Smoak
Food Service Director
Cathedral Health and
Rehabilitative Center

Mr. Jay Wyant
Director, Food Service
Hyde Park Nursing Home

PROGRAM LEVEL

FASHION MERCHANDISING

Mr. Gran P. Jenkins
Chairperson
Personnel Director
Sears, Roebuck and Company

Mr. Harvey Kaplan
Vice-President of
Merchandising
Vogue Shops

Ms. Betty Adams
Personnel Training Director
Ivey's Of Jacksonville

Mr. Ted Kuehne
Store Manager
Furchgott's of Florida

Ms. Mary C. Baker
Personnel Representative
May Cohens

Ms. Helen Lloyd
Supervisor, Distributive
Education
Duval County School Board

Mr. Jack Clancey
Personnel Manager
J. C. Penney Company

Ms. Elizabeth Taylor
Personnel Director (Retired)
Furchgott's of Florida

PROGRAM LEVEL

FOOD SERVICE TECHNOLOGY

Mr. Hans Kaunath
Chairperson
Director, Food and Beverage
Ponte Vedra Inn

Ms. Toni Martin, RD
Dietitian
President Elect, JDA
St. Vincent's Medical Center

Mr. Fred Abood
Owner
Green Derby Restaurant

Mr. William J. Patti
Owner
Patti's Italian and
American Restaurant

Mr. Lynn G. Fry
General Manager
University Club

Mr. Campbell Powell
Food Service Director
Regency House

Mr. Raymond Presby
Chef
San Jose Country Club

SERVICE AREA LEVEL

INDUSTRIAL AND TRADE EDUCATION

Mr. E. L. McInnis
Chairperson
Manager, Quality Assurance
and Training
Jacksonville Shipyards,
Incorporated

Mr. Joe Campbell
Consultant

Mr. Wayne Fisher
Administrative Assistant
Lewis Business Forms, Incorporated

Mr. Kenneth Friedman
President-Owner
Poster Art Displays, Incorporated

Mr. Milton Hudson
(Retired)

Mr. Clay Mort
Executive Manager
Associated General
Contractors of America

Mr. Ray E. Smith
Supervisor of Training
General Electric Company

PROGRAM LEVEL

AIR CONDITIONING AND REFRIGERATION

Mr. Lamar Blount
Chairperson
Service Manager
Florida Air Conditioners,
Incorporated

Mr. Walter Berry
President
Fountain Products and Equipment
Company, Incorporated

Mr. Robert G. Hardiman
Specialist; Training -
Central Air Conditioning
General Electric Company

Mr. Douglas L. Howard
Manager
Trane Company

Mr. William F. Hrabal
Mechanical Inspection
Supervisor
City of Jacksonville

Mr. Charles T. Vollers, III
Vice-President
Vollers Heating and Air
Conditioning Company

Mr. Pete Wood
President
Wood's Air Conditioning

PROGRAM LEVEL

AUTOMOTIVE MECHANICS

Mr. Everett Bamford
Chairperson
Service Manager
North Florida Lincoln Mercury

Mr. Garmon B. Joiner
General Manager
Powell Chrysler Plymouth,
Incorporated

Mr. John Bissell
Mechanic
Key Buick Company

Mr. Alan Kessler
District Manager
Reliatex, Incorporated

Mr. Charles E. Simmons
Sr. Staff Appraiser
The Travelers Insurance Company

PROGRAM LEVEL

BUILDING MAINTENANCE

Mr. Earl Horne
Chairperson
President-Owner
Earl Horne, Incorporated

Mr. Jesse A. Johnson
Executive Housekeeper
United States Naval Regional
Medical Center
U.S. Naval Air Station

Mr. Donald R. Blanz
President
Universal Maintenance
Systems, Incorporated

Mr. Joe La Barber
Vice-President and
Co-Owner
All Brite Sales Company

Mr. Charles E. Cook
Executive Housekeeper
Memorial Hospital

Mr. Frank Milford
Vice-President,
Marketing
Earl Horne, Incorporated

Mr. Hugh Hays
Manager, Building Services
Prudential Insurance Company of
America

Mr. Rudolph Nudo
Director, Plant Services
University Hospital of
Jacksonville

Mr. Leon M. Holmes
Operations Manager
(Jacksonville)
Royal Services, Incorporated

Mr. J. C. West
President
Universal Manufacturing
and Supply Company

PROGRAM LEVEL

CARPENTRY

Mr. Jerry Gardner
Chairperson
Owner
Nelson Construction Company of
Jacksonville

Mr. David McGrady
Carpenter
Orange Park, Florida

Mr. Maurice F. Burns
Contractor-Owner
Maurice F. Burns Construction
Neptune Beach, Florida

Mr. Verlon W. Thomas
Plant Manager
Bag Plant
Winn Dixie Stores, Incorporated

Mr. Robert A. Zienta
Manpower Training Director
Northeast Florida Builders
Association

PROGRAM LEVEL

GASOLINE ENGINE MECHANICS

Mr. L. G. Haven
Chairperson
Area Service Manager
Chrysler Marine Products
Operations

Mr. Curtis Johnson
Service Manager
Inlet Marine Sales and
Service, Incorporated
Orange Park, Florida

Mr. Robert Nickels
Co-Chairperson
President-Owner
Nickels Equipment

Mr. W. A. "Pete" Loftin
President-Owner
Loftin's Outboard, Incorporated

Mr. Ron Chamberlin
Service Manager
Honda West

Mr. John T. Lowe
Executive Vice-President
Jacksonville Marine Association

Mr. Tom Cosper
District Manager
Homelite

Mr. Leon Zimmerman
President
RADCO Distributors, Incorporated

PROGRAM LEVEL

GRAPHIC ARTS AND PRINTING

Mr. Wayne Fisher
Chairperson
Administrative Assistant
Lewis Business Forms, Incorporated

Mr. A. W. McClurkin
President
Peoples Screen Printing,
Incorporated

Mr. Emerson Bryan, Jr.
Instructor, Industrial
Arts
Duval County School Board

Mr. Peter Saalfield
Plant Manager
Turknett Turnbull Printers

Mr. Albert Lee, Jr.
President
Lee Printing, Incorporated

Mr. George W. Wheeler
Sales Representative
Virginia Paper Company

PROGRAM LEVEL

RADIO AND TV

Mr. Guy Sweetland
Chairperson
Zenith Factory Representative
Cain and Bultman, Incorporated

Mr. Karl Hunter
Certified Electronics
Technician
Monarch Radio and TV Service

Mr. Don Fleming
Chief Engineer
WIVY FM Radio Stations

Mr. Roger I. Marvin
Owner
Roger I. Marvin Radio &
TV Sales and Service

Mr. Nathaniel Hendley
Owner-Operator
Midway Radio and TV Sales and
Service

Mr. Calvin Scott
Owner
Monarch Radio and TV Service

Mr. Charles F. Williams
Co-Owner/Vice-President
in charge of Service
Williams Radio and TV
Service, Incorporated

PROGRAM LEVEL

WELDING

Mr. E. L. McInnis
Chairperson
Manager, Quality Assurance
and Training
Jacksonville Shipyards,
Incorporated

Mr. Jack Bradley
Welding Engineer
Offshore Power Systems

Mr. John Allen
Chief Metallurgist
Florida Machine and Foundry
Company

Mr. Jack Schmidt
Fabrication Superintendent
Atlanta Marine, Incorporated
Ft. George Island, Florida

Mr. George Strate
Sales Manager
Strate Welding Supply
Company, Incorporated

SERVICE AREA LEVEL

URBAN SKILLS CENTER

Mr. Bobby Reid
Chairperson
Director of Industrial
Relations
Florida Publishing Company

Mr. Marvin Boutwell
Division Chief
Building and Zoning Inspection
Department
City of Jacksonville

Mr. J. Reid Baggett
Director of Personnel
Baptist Memorial Hospital

Mr. William Corley
(ex-officio member)
Supervisor, Employment Service
Component
Urban Skills Center

Mr. Claude Bagwell
Deputy Chief
Building and Zoning Inspection
Department
City of Jacksonville

Mr. Harlo Everett
Registered Land Surveyor
Ellis, Curtis, and Kooker

Urban Skills Center (continued)

Mr. Sam Granger
President
Granger Lumber Company

Mr. J. C. Prime
Manager, Facility Planning
Southern Bell Telephone and
Telegraph Company

Mr. H. E. Grimm, Jr.
Owner
H. E. Grimm Auto Repairing

Mr. George K. Quinney
Corporate Recruiter
Blue Cross and Blue Shield of
Florida, Incorporated

Mr. O. N. Morgan
Training Assistant
Jacksonville Shipyards,
Incorporated

Mr. Robert Reynolds
Branch Equipment Control
Manager
Xerox Corporation

SERVICE AREA LEVEL ADULT AND CONTINUING EDUCATION

Ms. Margaret Bowden
Chairperson
Owner
Bowden's Antiques

Ms. Stephanie Kuhling
Counselor
Duval County School Board

Rev. Charles B. Dailey
Pastor
First Baptist Church of Oakland

Mr. Ronald Pannel
Community School Coordinator
Fort Caroline Junior High School

Ms. Juliet Fields
Instructor, Duval County
School Board

Ms. Emily Retherford
Consumer Education
Specialist

Mr. Lonnie Greggs
Victim Advocate
Duval County Courthouse

Ms. Doreen Sharkey
Editor, Women's News
Department
Florida Times-Union
Florida Publishing Company

Dr. Michael Halperin
Principal
North Shore Elementary School

Ms. Pauline Smith
(ex-officio member)
Instructor, Program
for the Aging
Florida Junior College
at Jacksonville

Mr. Richard Kaysen
Administrator
Regency House

Mr. Maurice Kohnhorst
Executive Director
Northeast Florida District
Mental Health Board

Ms. Ellen Spangler
Coordinator
Jacksonville Rape Crisis
Center

COURSE PREFIX INDEX

(COLLEGE CREDIT AND NON-COLLEGE CREDIT)

	Page(s)
AAC	Accounting and Computing128-129, 194
ABF	Auto Body and Fender194-195
ADS	Advertising Services129
AIC	Air Conditioning130, 195-196
AIO	Aircraft Operations130, 196
ANA	Anatomy130-131, 196
ANT	Anthropology131
APA	Apparel and Accessories131-132
APC	Applied Communications132, 196-197
APD	Applied Design132-133, 197
APM	Applied Mathematics133, 197
APS	Applied Science197
ARR	Appliance Repair197-198
ART	Art134, 198
AST	Astronomy134
AUE	Automotive (Distributive)198
AUM	Automotive Mechanics198
BCN	Building Construction and Maintenance135, 199
BDP	Business Data Processing Systems135-137, 199
BIO	Biology137, 199
BLC	Black Culture138, 200
BLR	Blueprint Reading200
BUS	General Business200
BOT	Botany138
BUW	Business Law138
CAP	Carpentry200
CCL	Coin Collecting201
CED	Consumer Education201
CEQ	Construction Equipment201
CFI	Commercial Fishery201
CGC	Care and Guidance of Children138-139, 202
CHA	Community Health Aid203
CHE	Chemistry139-140, 203
CHI	Chinese Language203
CIN	Cinematography140
CIT	Civil Technology140
CLT	Clothing & Textiles140-141, 203-205
CMP	Clothing Management, Production, Services205-206
COA	Commercial Art206
COM	Creative Writing141
COP	Community Preparedness206
COR	Corrections141-142, 206-207
COS	Communications142
COY	Cosmetology207

DEA	Dental Assisting	142-143, 208
DEH	Dental Hygiene	143-145
DIM	Diesel Mechanic	208
DRA	Dramatic Arts	145, 208
DRT	General Shop, Drafting	208
DTG	Drafting	146, 209
ECO	Economics	146, 209
ECY	Ecology	147, 209
EDU	Education	147
EFL	English as a Foreign Language	209
ELS	Electronics	147, 210
EME	Emergency Medical Technology	147, 210
ENG	English	147-148, 211
ENR	Engine Repair	211
ERE	Engineering Related	212
ESY	Safety Education	212
FAR	Family Relations	148, 212
FCR	Finance and Credit	148-150, 212-215
FIF	Firefighting	150-151, 215
FMC	Filing, Office Machines	152, 216
FMD	Foremanship, Supervision, and Management Development	152, 216
FOD	Food Distribution	216-217
FON	Foods and Nutrition	217-218
FRE	French Language	152, 218
FSE	Food Services (Distributive)	218
FSM	Food Services and Management	152-154, 218-220
GEO	Geography	154, 221
GER	German Language	155, 221
GEY	Geology	155, 221
GME	General Merchandise	155-156, 221
GMR	Retail Trade	222
GRA	Graphic Arts	156-158, 222
HEE	Home Economics Education	222
HEF	Home Equipment and Furnishing	222-224
HEN	Health Education	158, 224
HIS	History	158-159, 224-225
HMG	Homemaking (Comprehensive)	225
HOF	Housing and Home Furnishing	225
HOL	Hotel and Lodging	159-160, 225-226
HOM	Home Management	226
HSM	Health Services Management	226
HUM	Humanities	160-161, 227
IAE	Industrial Atomic Energy	161-162
IDS	Interdisciplinary Studies	162, 227
IEL	Industrial Electricity	162-163, 227-228
INM	Institutional and Home Management & Supportive Services	228
INR	International Relations	163
INS	Insurance	164-165, 228-232
INT	Inhalation Therapy	165-166
ISA	Industrial Safety	166, 232
ITA	Italian Language	232

R	International Trade	232
JU	Journalism	166
AE	Law Enforcement	167-168, 233
AS	Legal Assistant	168
AT	Latin	233
AW	Law	234
S	Library Science	168, 234
T	Literature	168-169, 234
AG	Marketing	169, 234
AM	Marketing Management	169-170, 235
AT	Mathematics	170-171, 235-236
AY	Masonry	236
EA	Medical Assistant	236
ET	Meteorology	172
EW	Metalworking	237
EY	Metallurgy	172
LT	Medical Laboratory Technology	172-173
SH	Machine Shop	237
TY	Mechanical Technology	173
US	Music	174-178, 238
UY	Musicology	178, 238
UA	Nursing Assistance, Aide	238
UR	Nursing	179, 238
CE	Oceanography	179-180
CO	Occupational Orientation	180
RH	Ornamental Horticulture	238
RI	Orientation	239
DE	Painting and Decorating	239
ED	Physical Education	180-183, 239
EL	Physical Education Leadership	183, 240
ET	Petroleum	240
HI	Philosophy	183, 240
HS	Physical Science	183-184, 240
HY	Physics	184
JR	Portuguese Language	241
JS	Political Science	184-185, 241
PF	Plumbing and Pipefitting	241
RN	Practical Nursing	242
SY	Psychology	185, 242-243
TR	Personnel Training and Related	243
TY	Photography	243
FO	Quantity Food	243
EL	Religion	185
EM	Recreational Management	186
ES	Real Estate	186
OO	Roofing	244
TV	Radio/Television	245
US	Russian Language	186-187, 245
AM	Supervisory and Administrative Management	187, 245
EO	Security Officers	245
HM	Sheet Metal	245-246

SLD	Special Learning Disabilities, Education	187, 24
SOC	Sociology	187, 24
SOP	Social Psychology	188, 246-24
SPA	Spanish Language	188, 24
SPE	Speech	188-189, 24
SSS	Social Sciences	189, 24
STO	Surgical Technician, Operating	24
STS	Stenographic, Secretarial, and Related	189-190, 248-24
STT	Structural Technology	19
TER	Technical Reporting	19
TPF	Textile Production and Fabrication	24
TRA	Transportation	191-192, 249-25
TYG	Typewriting	192-193, 25
UPH	Upholstering	25
WAC	Warehouse Clerk	25
WEL	Welding and Cutting	25
WOC	Woodworking	25
ZOO	Zoology	19

GENERAL INDEX

Accelerated High School Program	22-23
Accident Reporting	53
Accounting and Computing, Course Descriptions	128-129, 194
Accounting Program	
Curriculum, AS Degree	83
Course Descriptions	128-129
Accreditation	1, 8
Activities, Student	67-71
Administrative Officers	2
Administrators, Listing	253-278
Admission Requirements	20-35
Adult and Continuing Education Program(s)	16, 122-127
Adult Basic Education	122
Advertising, Course Description	129
Advising	57
Advisory Committees	279-306
Afro-American History, Course Descriptions	138, 200
Aging, Program for	126
Air Conditioning, Course Descriptions	130, 195-196
Aircraft Operations, Course Descriptions	130, 196
Anatomy, Course Descriptions	130-131, 196
Anthropology, Course Descriptions	131
Apparel, Course Descriptions	131-132
Appliance Repair, Course Descriptions	197-198
Applied Communications, Course Descriptions	132, 196-197
Applied Design, Course Descriptions	132-133, 197
Applied Mathematics, Course Descriptions	133, 197
Applied Science, Course Description	197
Architectural and Building Construction Technology Program	
Curriculum, AS Degree	84
Course Descriptions	135
Art, Course Descriptions	134, 198
Associate in Science Degree Programs	83-109
Astronomy, Course Description	134
Athletics	71
Attendance, Policy	51
Audio-Visual Services	19
Auditing of Courses	28
Auto Body and Fender, Course Descriptions	194-195
Automotive (Distributive), Course Description	198
Automotive Mechanics, Course Descriptions	198
Banking Program	
Curriculum, AS Degree	85
Course Descriptions	148-150
Biology, Course Descriptions	137, 199
Black History, Course Descriptions	138, 200
Blueprint Reading, Course Descriptions	200

Bookstore Services	61
Botany, Course Description	138
Buckley Amendment	14
Building Construction and Maintenance	
Course Descriptions	135, 199
Business Data Processing Systems	
Course Descriptions	135-137, 199
Business Law, Course Descriptions	138
Business Program, General	
Curriculum, AS Degree	95-96
Course Descriptions	187
Calendar	4-7
Campus Information	8-11
Campus Locations	1
Care and Guidance of Children, Course Descriptions	138-139, 202
Cancellation of a Course	35
Career and Adult Education Advisory Committees	279-306
Career Development Centers	57
Career Education Programs	15-16, 119-121
Career — Personal Testing	57-58
Carpentry Course Descriptions	200
Cashier/Sales/Checker, Course Description	222
Center for the Continuing Education of Women	126
Certificate Programs, College Credit	110-119
Certificate Programs, Non-College Credit	119-121
Chemistry, Course Descriptions	139-140, 203
Chief Administrative Officers	2
Child Care Services Program	
Curriculum, AS Degree	86
Course Descriptions	138-139
Chinese Language, Course Description	203
Cinematography, Course Description	140
Civil Engineer Technology Program	
Curriculum, AS Degree	86-87
Civil Technology, Course Description	140
Class Attendance	51
Clerical, General, Course Descriptions	152, 216
Clerical Program	
Curriculum, Certificate	111
Clothing Management, Production, Services	
Course Descriptions	205-206
Clothing and Textiles, Course Descriptions	140-141, 203-205
Coin Collecting, Course Description	201
Commercial Art, Course Description	206
Commercial Fishery, Course Description	201
Communications, Course Description	142
Communications Laboratory	18
Community Health Aide, Course Description	203
Community Preparedness, Course Description	206
Community Services	126

Computer Operations Program	
Curriculum, Certificate	111-112
Course Descriptions	135-137
Computer Programming Program	
Curriculum, Certificate	113
Course Descriptions	135-137
Construction Equipment, Course Descriptions	201
Consumer Education, Course Descriptions	201
Contents, Table of	3
Continuing Education, for Women	126
Cooperative Education Program	16-17
Course Descriptions	180
Corrections, Course Descriptions	141-142, 206-207
Correspondence or Extension Courses	27
Cosmetology, Course Description	207
Counseling	57
Course Descriptions, College Credit	128-193
Course Descriptions, Non-College Credit	194-252
Course Load, Maximum	51
Course Prefix Index	307-310
Creative Writing, Course Descriptions	141
Criminal Justice Education — Corrections Program	
Curriculum, AS Degree	87-88
Course Descriptions	141-142, 167-168
Criminal Justice Education — Law Enforcement Programs	
Curriculum, AS Degree	88
Curriculum, Certificate	113-114
Course Descriptions	167-168
Curricula	
Associate in Arts Degree	79-80
Associate in Science Degree	81-82
College Credit Certificate	110
Non-College Credit Career Education Programs	119-121
Adult and Continuing Education Programs	122-127
Data Processing Program	
Curriculum, AS Degree	89
Course Descriptions	135-137
Definition of Terms	72-73
Dental Assisting Program	
Curriculum, Certificate	115
Course Descriptions	142-143, 208
Dental Hygiene Program	
Curriculum, AS Degree	90
Course Descriptions	143-145
Developmental Education	17-18
Diesel Mechanic, Course Descriptions	208
Directory, Faculty and Administration	253-278
District Board of Trustees	2
District Offices	1, 8
Downtown Campus	10-11

Downtown Center	10
Drafting and Design Technology Program	
Curriculum, AS Degree	91
Course Descriptions	146
Drafting, Course Descriptions	146, 209
Drafting Program	
Curriculum, Certificate	116
Course Descriptions	146
Dramatic Arts, Course Descriptions	145, 208
Due Process Procedure	59-61
Early Admission Program	23
Ecology, Course Descriptions	147, 209
Economics, Course Descriptions	146, 209
Education, Course Descriptions	147
Electronics, Course Descriptions	147, 210
Electronic Engineering Technology Program	
Curriculum, AS Degree	91-92
Course Descriptions	162-163
Emergencies, First Aid	54
Emergency Medical Technology, Course Descriptions	147, 210
Employment, of Students	66
Engine Repair, Course Descriptions	211
Engineering Related, Course Description	212
English, Course Descriptions	147-148, 209, 211
Enrollment, College Credit Courses	20-25
Enrollment, Non-College Credit Courses	26-27
Equality, Policy on	13
Equal Opportunity Policy	13
Evening Adult Centers	10
Experience-Based Education	16-17
Faculty Listing	253-278
Family Education Act	14
Family Relations, Course Descriptions	148, 212
Fashion Merchandising Program	
Curriculum, AS Degree	92-93
Course Descriptions	131-132
Fee Schedule	38-45
Fee Waivers	43
Fees, for Tests	45
Filing, Office Machines, and General Office Clerical	
Course Descriptions	152, 216
Finance and Credit, Course Descriptions	148-150, 212-215
Financial Aid	61-66
Financial Information	
Registration Fees and Additional Fees Information	38-48
Financial Obligations	46
Firefighting, Course Descriptions	150-151, 215
Fire Science and Prevention Programs	
Curriculum, AS Degree	93-94
Curriculum, Certificate	116, 117
Course Descriptions	150-151

First Aid, Emergencies	54
Food Distribution, Course Descriptions	216-217
Food Services (Distributive), Course Descriptions	218
Food Services and Management, Course Descriptions	152-154, 218-220
Food and Vending Service	61
Food Service Technology Programs	
Curriculum, AS Degree	94-95
Curriculum, Certificate	117
Course Descriptions	152-154
Foods and Nutrition, Course Descriptions	217-218
Foremanship, Supervision, and Management Development	
Course Descriptions	152, 216
Forgiveness Policy	51-52
Foundation, Inc., Florida Junior College at Jacksonville	63-64
Fred H. Kent Center	9
French Language, Course Descriptions	152, 218
GED Examination	124-125
General Business Program	
Curriculum, AS Degree	95-96
Course Descriptions	187, 200
General Education Requirements	
Associate in Arts Degree	74-77
Associate in Science Degree	78
General Merchandise, Course Descriptions	155-156, 221
General Shop, Drafting, Course Descriptions	208
Geography, Course Descriptions	154
Geology, Course Descriptions	155, 221
German Language, Course Descriptions	155, 221
Grade Deadlines	52
Grade Points	52-53
Grading System	51-52
Graduation Requirements	49-50
Graduation, with Honors	50
Grants	64
Graphic Arts Program	
Curriculum, AS Degree	101-102
Course Descriptions	156-158, 222
Health, Course Descriptions	158, 224
Health Services	70
Health Services Management, Course Description	226
High School Completion Program	123-124
High School Equivalency Program	124-125
History, Course Descriptions	158-159, 224-225
History of the College	8
Holidays	4
Home Economics Education, Course Description	222
Home Equipment and Furnishing, Course Descriptions	222-224
Homemaking, Course Description	225
Home Management, Course Descriptions	226
Honors Graduation	50

Hospitality Management Program	
Curriculum, AS Degree	96-97
Course Descriptions	159-160
Hotel and Lodging, Course Descriptions	159-160, 225-226
Housing	48
Housing and Home Furnishing, Course Descriptions	225
Human Rights	13
Humanities, Course Descriptions	160-161, 227
Incomplete Grade Deadlines	51-52
Industrial Atomic Energy, Course Descriptions	161-162
Industrial Electricity, Course Descriptions	162-163, 227-228
Industrial Safety, Course Descriptions	166, 232
Inhalation Therapy, Course Descriptions	165-166
Institutional and Home Management and Supporting Services, Course Description	228
Insurance, Professional Malpractice	44
Insurance Program	
Curriculum, AS Degree	97-98
Course Descriptions	164-165, 228-232
Interdisciplinary Studies, Course Descriptions	162, 227
International Relations, Course Description	163
International Applicant	25
International Trade, Course Description	232
Italian Language, Course Description	232
Job Placement	58
Journalism, Course Description	166
Kent Center, Fred H.	9
Latin, Course Description	233
Law, Course Description	234
Law Enforcement, Course Descriptions	167-168, 233
Learning Resources Centers	19
Legal Assistant Course Descriptions	168
Library Science, Course Descriptions	168, 234
Library and Audio-Visual Services	19
Literature, Course Descriptions	168-169, 234
Loans	65-66
Machine Shop, Course Descriptions	237
Marketing Program	
Curriculum, AS Degree	98-99
Course Descriptions	169-170, 234-235
Masonry, Course Descriptions	236
Mathematics, Course Descriptions	170-171, 235-236
Marketing Management, Course Descriptions	169-170, 235
Mechanical Engineering Technology Program	
Curriculum, AS Degree	99-100
Course Descriptions	173
Mechanical Technology, Course Descriptions	173
Medical Assistant, Course Description	236
Medical Laboratory Technology Programs	
Curriculum, AS Degree	100-101
Curriculum, Certificate	118
Course Descriptions	172-173

Metallurgy, Course Description	172
Metalworking, Course Descriptions	237
Meteorology, Course Description	172
Military Service School Credits	26-27
Music, Course Descriptions	174-178, 238
Musicology, Course Descriptions	178, 238
Non-College Credit Certificate Programs	119-121
Non-College Credit Course Descriptions	194-252
North Campus	8
Nursing Assistance, Aide, Course Description	238
Nursing, Technical Program	
Curriculum, AS Degree	106-107
Course Descriptions	179, 238
Objectives, of the College	12-13
Occupational Orientation, Course Descriptions	180
Oceanography, Course Descriptions	179-180
Orientation	57
Orientation, Course Description	239
Ornamental Horticulture, Course Description	238
Painting and Decorating, Course Description	239
Personnel, Training, Course Description	243
Petroleum, Course Description	240
Philosophy, Course Descriptions	183, 240
Philosophy, of the College	12-13
Photography, Course Descriptions	243
Physical Education, Course Descriptions	180-183, 239-240
Physical Science, Course Descriptions	183-184, 240
Physics, Course Descriptions	184
Plumbing and Pipefitting, Course Descriptions	241
Policies and Regulations	51-56
Political Science, Course Descriptions	184-185, 241
Portuguese Language, Course Description	241
Practical Nursing, Course Description	242
Prefix, Course Index	307-310
Printing/Graphic Arts Program	
Curriculum, AS Degree	101-102
Course Descriptions	156-158
Program Locations, Campus	
AA Degree	80
AS Degree	82
College Credit Certificate	110
Non-College Credit Certificate	120-121
Adult and Continuing Education	127
Psychology, Course Descriptions	185, 242-243
Quantity Food, Course Descriptions	243
Radio, Television, Course Descriptions	245
Real Estate Program	
Curriculum, AS Degree	102-103
Course Descriptions	186, 244
Recreational Management, Course Description	186
Refunds, of Fees	46-48
Registration, Concurrent	54

Regulations, Policies and	51-56
Religion, Course Descriptions	185
Residency Affidavit	21-22
Respiratory Therapy Program	
Curriculum, AS Degree	103-104
Course Descriptions	165-166
Retail Merchandising Program	
Curriculum, AS Degree	104-105
Course Descriptions	155-156
Retail Trade, Course Description	222
Roofing, Course Descriptions	244
Russian Language, Course Descriptions	186-187, 245
Safety Education, Course Descriptions	212
Schedule Changes	53
Scholarships	62-64
Secretarial Science Program	
Curriculum, AS Degree	105-106
Course Descriptions	189-190, 192-193
Security Officers, Course Description	245
Servicemen's Opportunity College	28
Servicemen's, Veterans' Information	28-35
Sheet Metal, Course Descriptions	245-246
Smoking Ban	53
Social Psychology, Course Descriptions	188, 246
Social Sciences, Course Descriptions	189, 247
Social Security Information	20, 27
Sociology, Course Descriptions	188, 246-247
South Campus	9
Spanish Language, Course Descriptions	188, 247
Special Instructional Services	16-19
Special Learning Disabilities, Education	
Course Descriptions	187, 246
Special Services Program	18
Special Student Status	22
Speech, Course Descriptions	188-189, 247
Stenographic, Secretarial, and Related,	
Course Descriptions	189-190, 248-249
Stenography Program	
Curriculum, Certificate	118-119
Course Descriptions	189-190, 192-193
Structural Technology, Course Descriptions	190
Student Activities	67-71
Student Appeals	61
Student Development	57-66
Student Employment	66
Student Government Association	69
Student Rights and Responsibilities	58-61
Supervisory and Administrative Management	
Course Descriptions	187, 245
Surgical Technician, Operation, Course Description	247
Surveying, Course Description	140

Table of Contents	3
Technical Nursing Program	
Curriculum, AS Degree	106-107
Course Descriptions	179
Technical Reporting, Course Description	190
Terms, Definition of	72-73
Testing	36-37, 45, 57
Textile Production and Fabrication	
Course Descriptions	249
Traffic Regulations	54-56
Transcript Requests	27
Transfer Students	24-25
Transportation Program	
Curriculum, AS Degree	107-108
Course Descriptions	191-192, 249-250
Trustees, Board of	2
Typewriting, Course Descriptions	192-193, 250
University Parallel Program	15
Upholstering, Course Descriptions	251
Veterans' Information	28-35
Waivers, of Fees	43
Warehouse Clerk, Course Description	251
Welding and Cutting, Course Description	251
Withdrawal Regulations	34-35
Women, Continuing Education Center	126
Woodworking, Course Descriptions	252
X-Ray Engineering Technology Program	
Curriculum, AS Degree	108-109
Course Descriptions	161-163
Zoology, Course Description	193

NORTH campus

DUVAL COUNTY

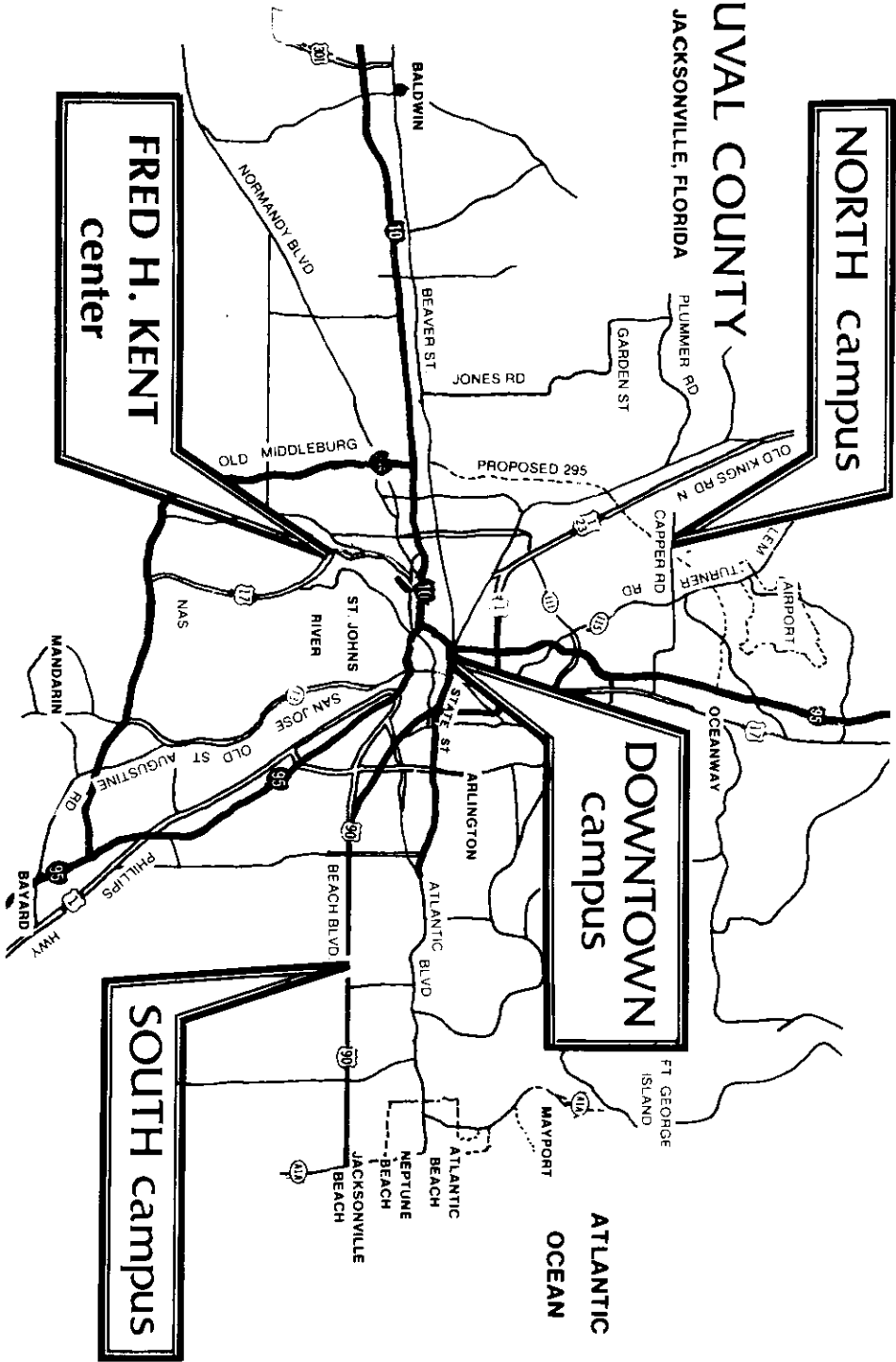
JACKSONVILLE, FLORIDA

DOWNTOWN campus

ATLANTIC OCEAN

SOUTH campus

FRED H. KENT center



Georgia

ST. MARY'S RIVER

BALDWIN

CALLAHAN

HILLIARD

Georgia

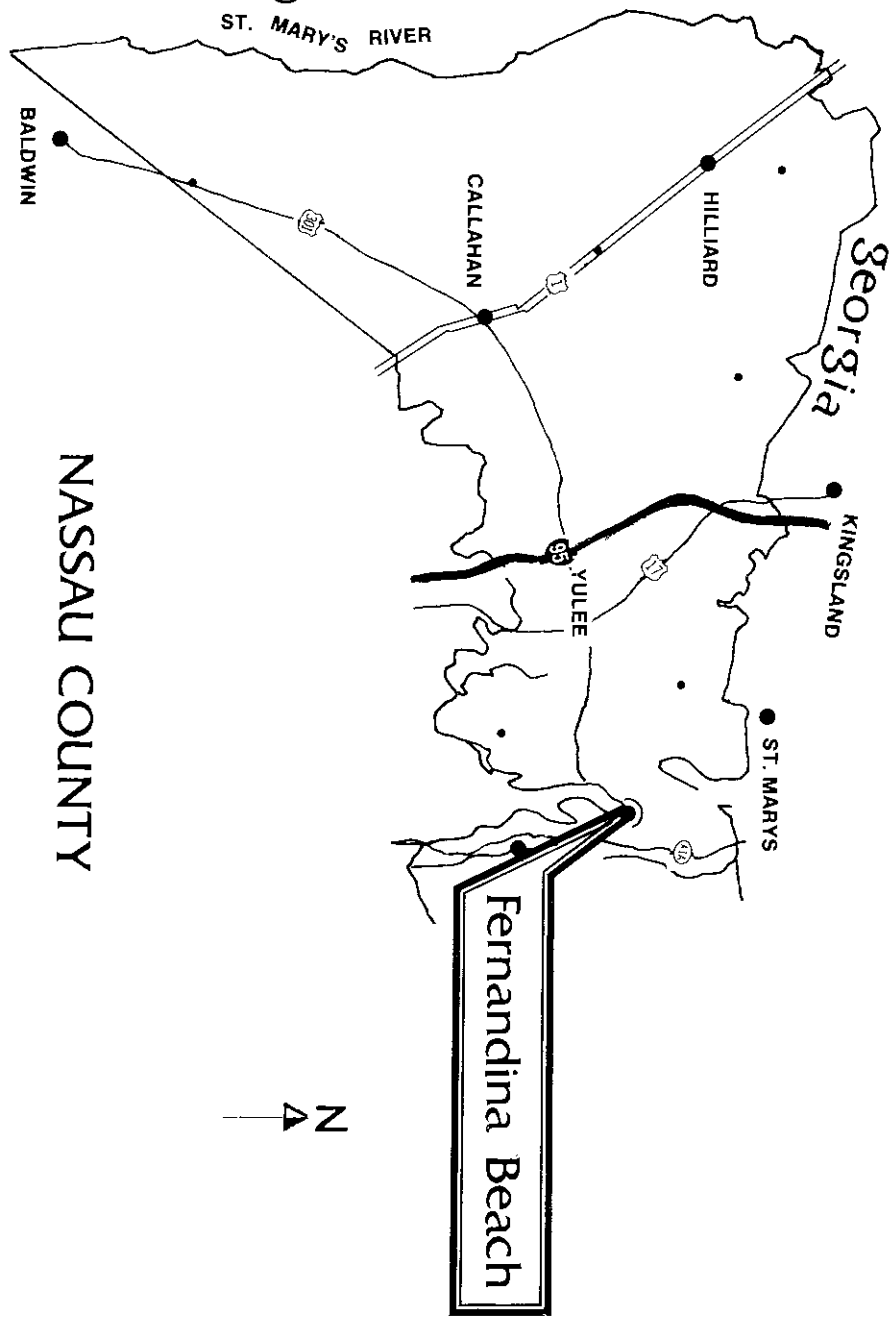
NASSAU COUNTY

KINGSLAND

YULEE

ST. MARYS

Fernandina Beach





Florida Junior College at Jacksonville
21 West Church Street
Jacksonville, Florida 32202

TO:

NO POSTAGE
NECESSARY
IF MAILED
IN THE
UNITED STATES
PAID
PERMIT NO. 3804
Jacksonville, Fla.